

# SunWise Essential 2 Portfolio Series Growth Segregated Fund

Guarantee Type Investment Class 75/75 CAD



## FUND OVERVIEW

The Fund invests in the Portfolio Series Growth Fund. The Underlying Fund invests mostly in shares and bonds of firms from around the world.

## FUND DETAILS

Inception date	August 2012
Total net assets (\$CAD) As at 2021-09-30	\$1.8 million
NAVPS As at 2021-10-25	\$20.7190
MER (%) As at 2021-06-30	2.98
Management fee (%)	2.02
Asset class	Asset Allocation
Currency	CAD
Minimum investment	\$500 initial / \$100 additional

### Risk rating<sup>1</sup>

Low	Low to moderate	Moderate	Moderate to high	High
-----	-----------------	----------	------------------	------

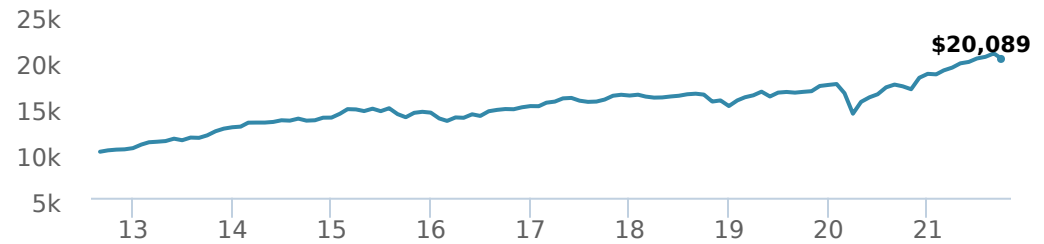
## FUND CODES

Investment Class 75/75	ISC 22144 DSC 22244
PIM CLASS	22344

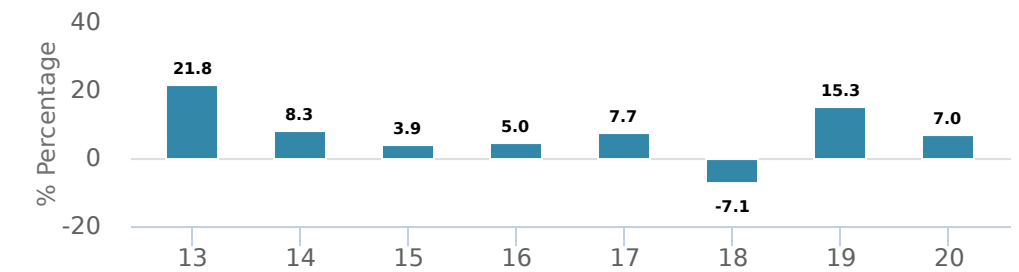
## PERFORMANCE<sup>2</sup>

As at 2021-09-30

### Growth of \$10,000 (since inception date)



### Calendar year performance



### Average annual compound returns

YTD	1 Mo	3 Mo	6 Mo	1 Y	3 Y	5 Y	10 Y	Inception*
8.80%	-2.90%	-0.20%	4.90%	17.40%	7.40%	6.50%	-	7.90%

\*Since inception date

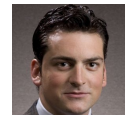
## MANAGEMENT TEAM



CI GAM | Multi-Asset Management, led by portfolio manager Alfred Lam, oversees CI's managed solutions. The team's philosophy is centred on delivering predictable outcomes for investors by utilizing a full set of asset classes while adding value and managing risk through multiple factors. CI GAM | Multi Asset Management is a division of CI Global Asset Management, a subsidiary of CI Financial Corp.



Alfred Lam



Marchello Holditch

# SunWise Essential 2 Portfolio Series Growth Segregated Fund

Guarantee Type Investment Class 75/75 CAD



## PORTFOLIO ALLOCATIONS<sup>3</sup>

As at 2021-09-30

Asset allocation	(%)	Sector allocation	(%)	Geographic allocation	(%)
International Equity	32.12%	Other	19.93%	Canada	34.13%
US Equity	28.64%	Financial Services	17.41%	United States	31.67%
Canadian Equity	25.95%	Technology	14.06%	Other	15.25%
Cash and Equivalents	3.94%	Consumer Services	8.29%	Japan	5.72%
Canadian Government Bonds	2.85%	Basic Materials	7.18%	United Kingdom	4.08%
Canadian Corporate Bonds	2.65%	Fixed Income	7.16%	France	2.15%
Income Trust Units	1.10%	Industrial Services	6.57%	Germany	2.09%
Commodities	1.00%	Industrial Goods	6.55%	Netherlands	2.07%
Foreign Government Bonds	0.98%	Energy	6.43%	Cayman Islands	1.62%
Other	0.77%	Consumer Goods	6.42%	Bermuda	1.22%

## TOP HOLDINGS

	Sector	(%)
1. CI Portfolio Series Growth Fd CI I	Mutual Fund	99.50%

Over 35,000 financial advisors have chosen CI Global Asset Management as a partner. We believe that Canadians have the best opportunity for investments success by using the services of a professional financial advisor. [Learn more at ci.com.](#)

<sup>1</sup> The risk level of a fund has been determined in accordance with a standardized risk classification methodology in National Instrument 81-102, that is based on the fund's historical volatility as measured by the 10-year standard deviation of the fund's returns. Where a fund has offered securities to the public for less than 10 years, the standardized methodology requires that the standard deviation of a reference mutual fund or index that reasonably approximates the fund's standard deviation be used to determine the fund's risk rating. Please note that historical performance may not be indicative of future returns and a fund's historical volatility may not be indicative of future volatility.

<sup>2</sup> Commissions, trailing commissions, management fees and expenses all may be associated with mutual fund investments. Please read the prospectus before investing. The indicated rates of return are the historical annual compounded total returns net of fees and expenses payable by the fund (except for figures of one year or less, which are simple total returns) including changes in security value and reinvestment of all dividends/distributions and do not take into account sales, redemption, distribution or optional charges or income taxes payable by any securityholder that would have reduced returns. Mutual funds are not guaranteed, their values change frequently, and past performance may not be repeated.

<sup>3</sup> Portfolio allocations will fluctuate over the life of the mutual fund as the portfolio holdings and market value of each security changes. The portfolio manager(s) may change the portfolio allocations in some or all of the sectors.

The contents are not to be used or construed as investment advice or as an endorsement or recommendation of any entity of security discussed.

Certain statements contained in this communication are based in whole or in part on information provided by third parties and CI has taken reasonable steps to ensure their accuracy.

The rates of return are used only to illustrate the effects of the compound growth rate and are not intended to reflect future values or returns on investment in an investment fund.

The "Growth of \$10,000" chart shows the final value of a hypothetical \$10,000 investment in securities in this class of the fund as at the end of the investment period indicated and is not intended to reflect future values or returns on investment in such securities.

Management Expense Ratio ("MER") represents the trailing 12-month management expense ratio, which reflects the cost of running the fund, inclusive of applicable taxes including HST, GST and QST (excluding commissions and other portfolio transaction costs) as a percentage of daily average net asset value the period, including the fund's proportionate share of any underlying fund(s) expenses, if applicable. The MER is reported in each fund's Management Report of Fund Performance ("MRFP"). MRFPs can be found within the Documents tab on ci.com.

CI Global Asset Management is a registered business name of CI Investments Inc.

©CI Investments Inc. 2021. All rights reserved.

Published October 2021