

# CI Global Investment Grade Class

Series PH USD Hedged



AS AT MARCH 31, 2024

## FUND OVERVIEW

CI Global Investment Grade Class aims to generate income and the potential for long-term capital appreciation by investing primarily in a diversified portfolio of investment grade fixed-income securities issued by companies or governments of any size, located anywhere in the world.

## FUND DETAILS

Inception date	November 2022
CAD Total net assets (\$CAD) As at 2024-03-28	\$594.8 million
NAVPS	\$10.3184
MER (%) As at 2023-09-30	0.17
Management fee (%)	Negotiable
Asset class	Global Fixed Income
Currency	USD Hedged
Minimum investment	\$500 initial/\$25 additional
Distribution frequency	Monthly
Last distribution	\$0.0258
Average Credit Rating	A-

### Risk rating<sup>1</sup>



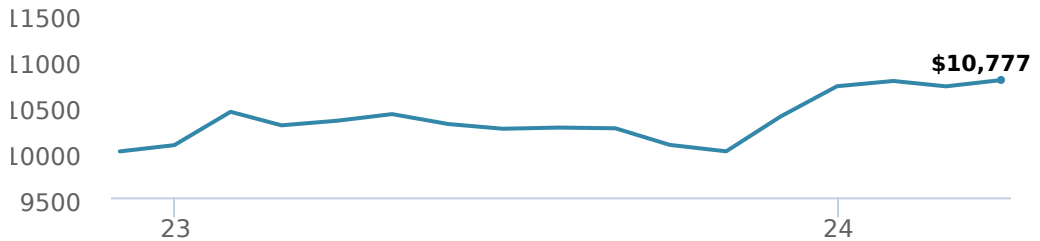
## FUND CODES

PH	58102
AH	ISC 50102 DSC SO* 50302 LL SO 52102
FH	54102
IH	55102

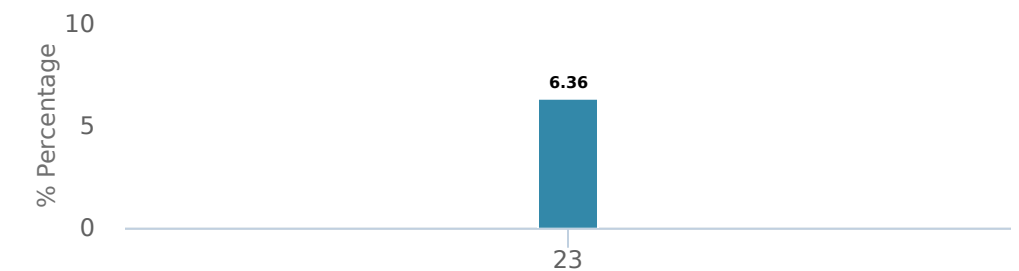
\*No new purchases directly into switch only funds.

## PERFORMANCE<sup>2</sup>

Growth of \$10,000 (since inception date)



### Calendar year performance



### Average annual compound returns

	YTD	1 Mo	3 Mo	6 Mo	1 Y	3 Y	5 Y	10 Y	Inception*
	0.64%	0.65%	0.64%	7.01%	4.28%	-	-	-	5.67%

\*Since inception date

## DISTRIBUTION HISTORY<sup>3</sup>

Payable date	Total	Payable date	Total
2024-03-22	0.0258	2023-11-24	0.0280
2024-03-21	0.0280	2023-10-27	0.0280
2024-02-23	0.0280	2023-09-21	0.0280
2024-01-26	0.0280	2023-08-25	0.0280
2023-12-15	0.0280	2023-07-28	0.0280

## CI PREFERRED PRICING<sup>4</sup>

Investment amount	Combined fee reduction
\$100,000 - \$250,000	0.00%
\$250,000 - \$500,000	0.03%
\$500,000 - \$1,000,000	0.05%
\$1,000,000 - \$2,500,000	0.08%
\$2,500,000 - \$5,000,000	0.10%
\$5,000,000 and above	0.13%

## FUND CHARACTERISTICS

Average Coupon %	4.36
Duration	5.30
Yield	5.59

## RATING SUMMARY (%)

AAA	19.65
AA	1.98
A	20.04
BBB	48.03
BB	8.17
B	1.07
NR	1.06
Average Credit Rating	A-

\*Corporate and Government bonds only.

# CI Global Investment Grade Class

Series PH USD Hedged



AS AT MARCH 31, 2024

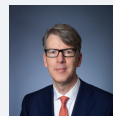
## PORTFOLIO ALLOCATIONS<sup>5</sup>

Asset allocation	(%)	Sector allocation	(%)	Geographic allocation	(%)
Foreign Corporate Bonds	51.32	Fixed Income	88.89	United States	63.24
Foreign Government Bonds	17.35	Cash and Cash Equivalent	4.43	Canada	28.83
Canadian Corporate Bonds	15.59	Financial Services	3.84	Europe	2.58
Canadian Equity	4.94	Energy	0.94	Germany	2.11
Cash and Equivalents	4.43	Telecommunications	0.56	Australia	1.44
Canadian Government Bonds	2.78	Real Estate	0.56	Cayman Islands	1.19
US Equity	1.46	Technology	0.40	Ireland	0.45
Canadian Bonds - Other	1.46	Mutual Fund	0.34	Other	0.16
Mortgages	0.78	Utilities	0.16		
Other	-0.11	Other	-0.12		

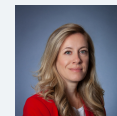
## TOP HOLDINGS

	Sector	(%)
1. CI Global Investment Grade Fund Series I	Mutual Fund	98.77%
2. National Hockey League 3.02 06Jan27 3.02% 06-Jan-2027	Fixed Income	0.53%
3. Cad Cash Sweep	Cash and Cash Equivalent	0.21%
4. Nhl U.S. Funding Lp 3.29 13Aug30 3.29% 13-Aug-2030	Fixed Income	0.20%
5. Nhl Lwf Canlp 2.49 19Oct28 2.49% 19-Oct-2028	Fixed Income	0.17%
6. National Hockey League 2.82 06Jan26 2.82% 06-Jan-2026	Fixed Income	0.11%

## MANAGEMENT TEAM



John Shaw



Leanne Ongaro

**Over 35,000 financial advisors have chosen CI Global Asset Management as a partner. We believe that Canadians have the best opportunity for investments success by using the services of a professional financial advisor. [Learn more at ci.com](https://www.ci.com).**

<sup>1</sup> The risk level of a fund has been determined in accordance with a standardized risk classification methodology in National Instrument 81-102, that is based on the fund's historical volatility as measured by the 10-year standard deviation of the fund's returns. Where a fund has offered securities to the public for less than 10 years, the standardized methodology requires that the standard deviation of a reference mutual fund or index that reasonably approximates the fund's standard deviation be used to determine the fund's risk rating. Please note that historical performance may not be indicative of future returns and a fund's historical volatility may not be indicative of future volatility.

<sup>2</sup> Commissions, trailing commissions, management fees and expenses all may be associated with mutual fund investments. Please read the prospectus before investing. The indicated rates of return are the historical annual compounded total returns net of fees and expenses payable by the fund (except for figures of one year or less, which are simple total returns) including changes in security value and reinvestment of all dividends/distributions and do not take into account sales, redemption, distribution or optional charges or income taxes payable by any securityholder that would have reduced returns. Mutual funds are not guaranteed, their values change frequently, and past performance may not be repeated.

<sup>3</sup> Please refer to the fund's simplified prospectus for distribution information.

<sup>4</sup> CI Preferred Pricing fee reductions apply to management and administration fees and start at \$100,000.

<sup>5</sup> Portfolio allocations will fluctuate over the life of the mutual fund as the portfolio holdings and market value of each security changes. The portfolio manager(s) may change the portfolio allocations in some or all of the sectors.

The contents are not to be used or construed as investment advice or as an endorsement or recommendation of any entity of security discussed.

Certain statements contained in this communication are based in whole or in part on information provided by third parties and CI has taken reasonable steps to ensure their accuracy.

The rates of return are used only to illustrate the effects of the compound growth rate and are not intended to reflect future values or returns on investment in an investment fund.

The "Growth of \$10,000 invested" chart shows the final value of a hypothetical \$10,000 investment in securities in this class/series of the fund as at the end of the investment period indicated and is not intended to reflect future values or returns on investment in such securities.

Management Expense Ratio ("MER") represents the trailing 12-month management expense ratio, which reflects the cost of running the fund, inclusive of applicable taxes including HST, GST and QST (excluding commissions and other portfolio transaction costs) as a percentage of daily average net asset value the period, including the fund's proportionate share of any underlying fund(s) expenses, if applicable. The MER is reported in each fund's Management Report of Fund Performance ("MRFP"). MRFPs can be found within the Documents tab on ci.com.

CI Global Asset Management is a registered business name of CI Investments Inc.

©CI Investments Inc. 2024. All rights reserved.

Published April 2024