

# CI U.S. Equity & Income Fund

Series AH USD Hedged



AS AT AUGUST 31, 2023

## FUND OVERVIEW

CI U.S. Equity & Income Fund aims to provide investors with stable income and long-term capital appreciation by investing in a diversified portfolio consisting primarily of U.S. equity and fixed-income securities.

## FUND DETAILS

Inception date	March 2020
Total net assets (\$CAD) As at 2023-08-31	\$717.4 million
NAVPS	\$11.0197
MER (%) As at 2023-03-31	2.27
Management fee (%)	1.85
Asset class	U.S. Balanced
Currency	USD Hedged
Minimum investment	\$500 initial/\$25 additional
Distribution frequency	Monthly
Last distribution	\$0.0230

## Risk rating<sup>1</sup>



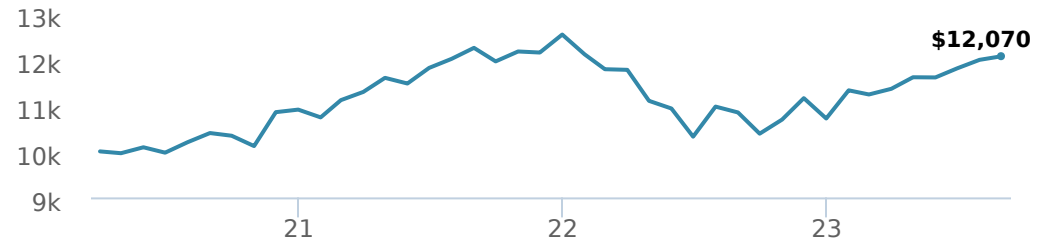
## FUND CODES

AH	ISC 50249 DSC SO* 3149 LL SO 3049
FH	54249
IH	55249
PH	58249

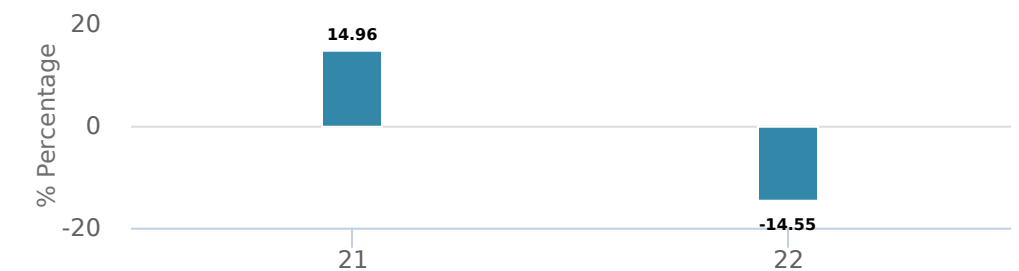
\*No new purchases directly into switch only funds.

## PERFORMANCE<sup>2</sup>

Growth of \$10,000 (since inception date)



Calendar year performance



Average annual compound returns

YTD	1 Mo	3 Mo	6 Mo	1 Y	3 Y	5 Y	10 Y	Inception*
12.64%	0.66%	3.98%	7.41%	11.27%	5.09%	-	-	5.56%

\*Since inception date

## DISTRIBUTION HISTORY<sup>3</sup>

Payable date	Total	Payable date	Total
2023-08-25	0.0230	2023-03-24	0.0230
2023-07-28	0.0230	2023-02-24	0.0230
2023-06-23	0.0230	2023-01-27	0.0230
2023-05-26	0.0230	2022-12-23	0.0062
2023-04-21	0.0230	2022-12-16	0.0168

## CI PREFERRED PRICING<sup>4</sup>

Investment amount	Combined fee reduction
\$100,000 and above	0.05%
\$250,000 and above	0.08%
\$500,000 and above	0.13%
\$1,000,000 and above	0.18%
\$2,500,000 and above	0.23%
\$5,000,000 and above	0.25%

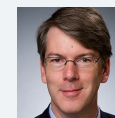
## MANAGEMENT TEAM



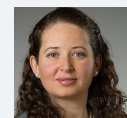
Aubrey Hearn



Jack Hall



John Shaw



Fernanda Fenton

AS AT AUGUST 31, 2023

## PORTFOLIO ALLOCATIONS<sup>5</sup>

Asset allocation	(%)	Sector allocation	(%)	Geographic allocation	(%)
US Equity	56.58	Fixed Income	24.22	United States	79.68
Foreign Corporate Bonds	13.43	Financial Services	22.11	Canada	9.16
Foreign Government Bonds	10.28	Technology	16.26	Bermuda	2.53
Canadian Equity	8.59	Consumer Services	12.65	Other	2.18
International Equity	4.65	Healthcare	5.03	United Kingdom	1.42
Income Trust Units	3.88	Real Estate	4.66	Ireland	1.39
Cash and Equivalents	1.15	Industrial Services	4.58	Multi-National	1.37
Other	0.93	Other	4.22	Cayman Islands	1.10
Canadian Corporate Bonds	0.51	Industrial Goods	4.13	France	1.03
		Consumer Goods	2.14	Dominican Republic	0.14

## TOP HOLDINGS

	Sector	(%)
1. Alphabet Inc Cl C	Information Technology	6.21%
2. Mastercard Inc Cl A	Diversified Financial Services	4.29%
3. Amazon.com Inc	Retail	4.00%
4. Visa Inc Cl A	Diversified Financial Services	3.65%
5. Meta Platforms Inc Cl A	Information Technology	3.22%
6. Brookfield Corp Cl A	Asset Management	3.22%
7. KKR & Co Inc	Asset Management	3.04%
8. JPMorgan Chase & Co	Banking	2.80%
9. Microsoft Corp	Information Technology	2.71%
10. Berkshire Hathaway Inc Cl A	Insurance	2.48%
11. Booking Holdings Inc	Leisure	2.47%
12. UnitedHealth Group Inc	Healthcare Services	2.33%
13. Live Nation Entertainment Inc	Leisure	2.29%
14. United States Treasury 4.00% 15-Nov-2052	Fixed Income	2.14%
15. United States Treasury 4.13% 15-Nov-2032	Fixed Income	1.71%

Over 35,000 financial advisors have chosen CI Global Asset Management as a partner. We believe that Canadians have the best opportunity for investments success by using the services of a professional financial advisor. [Learn more at ci.com.](#)

<sup>1</sup> The risk level of a fund has been determined in accordance with a standardized risk classification methodology in National Instrument 81-102, that is based on the fund's historical volatility as measured by the 10-year standard deviation of the fund's returns. Where a fund has offered securities to the public for less than 10 years, the standardized methodology requires that the standard deviation of a reference mutual fund or index that reasonably approximates the fund's standard deviation be used to determine the fund's risk rating. Please note that historical performance may not be indicative of future returns and a fund's historical volatility may not be indicative of future volatility.

<sup>2</sup> Commissions, trailing commissions, management fees and expenses all may be associated with mutual fund investments. Please read the prospectus before investing. The indicated rates of return are the historical annual compounded total returns net of fees and expenses payable by the fund (except for figures of one year or less, which are simple total returns) including changes in security value and reinvestment of all dividends/distributions and do not take into account sales, redemption, distribution or optional charges or income taxes payable by any securityholder that would have reduced returns. Mutual funds are not guaranteed, their values change frequently, and past performance may not be repeated.

<sup>3</sup> Please refer to the fund's simplified prospectus for distribution information.

<sup>4</sup> CI Preferred Pricing fee reductions apply to management and administration fees and start at \$100,000.

<sup>5</sup> Portfolio allocations will fluctuate over the life of the mutual fund as the portfolio holdings and market value of each security changes. The portfolio manager(s) may change the portfolio allocations in some or all of the sectors.

The contents are not to be used or construed as investment advice or as an endorsement or recommendation of any entity of security discussed.

Certain statements contained in this communication are based in whole or in part on information provided by third parties and CI has taken reasonable steps to ensure their accuracy.

The rates of return are used only to illustrate the effects of the compound growth rate and are not intended to reflect future values or returns on investment in an investment fund.

The "Growth of \$10,000 invested" chart shows the final value of a hypothetical \$10,000 investment in securities in this class/series of the fund as at the end of the investment period indicated and is not intended to reflect future values or returns on investment in such securities.

Management Expense Ratio ("MER") represents the trailing 12-month management expense ratio, which reflects the cost of running the fund, inclusive of applicable taxes including HST, GST and QST (excluding commissions and other portfolio transaction costs) as a percentage of daily average net asset value the period, including the fund's proportionate share of any underlying fund(s) expenses, if applicable. The MER is reported in each fund's Management Report of Fund Performance ("MRFP"). MRFPs can be found within the Documents tab on ci.com.

CI Global Asset Management is a registered business name of CI Investments Inc.

©CI Investments Inc. 2023. All rights reserved.

Published September 2023