

CI Global Equity & Income Fund

Series P CAD



AS AT MARCH 31, 2025

FUND OVERVIEW

This fund invests primarily in fixed income and high-yielding equity securities and other income-producing securities throughout the world.

FUND DETAILS

Inception date	May 2017
CAD Total net assets (\$CAD) As at 2025-03-28	\$358.7 million
NAVPS	\$6.9248
MER (%) As at 2024-09-30	0.23
Management fee (%)	0.90
Asset class	Diversified Income
Currency	CAD
Minimum investment	\$500 initial/\$25 additional
Distribution frequency	Monthly
Last distribution	\$0.0630

Risk rating¹



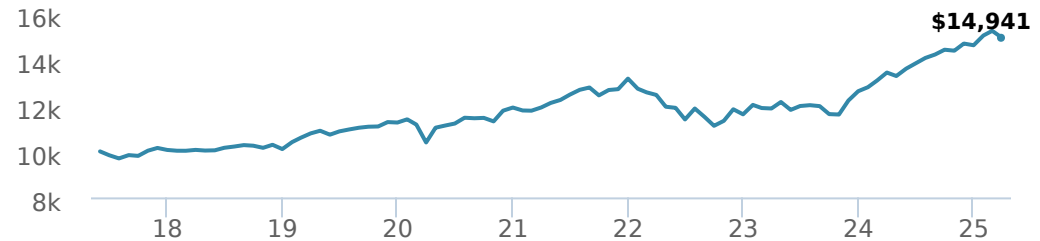
FUND CODES

	T5	T8
P	90060	
A	ISC 6803 DSC SO* 6813 LL SO 6823	ISC 114T5 DSC SO 214T5 LL SO 314T5
E	16157	ISC 614T8 DSC SO 714T8 LL SO 814T8
EF	15157	
F	6833	414T5
I	6843	914T8
O	18157	18403

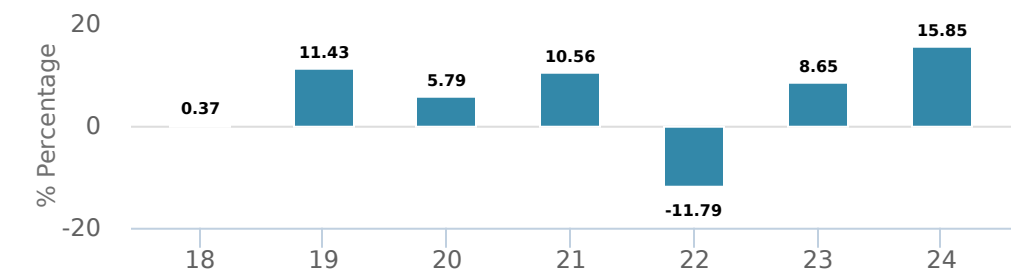
*No new purchases directly into switch only funds.

PERFORMANCE²

Growth of \$10,000 (since inception date)



Calendar year performance



Average annual compound returns

YTD	1 Mo	3 Mo	6 Mo	1 Y	3 Y	5 Y	10 Y	Inception*
2.23%	-1.98%	2.23%	3.60%	11.26%	6.25%	7.54%	-	5.20%

*Since inception date

DISTRIBUTION HISTORY³

Payable date	Total	Payable date	Total
2025-03-28	0.0630	2024-10-25	0.0630
2025-02-21	0.0630	2024-09-27	0.0630
2025-01-24	0.0630	2024-08-23	0.0630
2024-12-20	0.0630	2024-07-26	0.0630
2024-11-22	0.0630	2024-06-21	0.0630

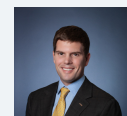
CI PREFERRED PRICING⁴

Investment amount	Combined fee reduction
\$100,000 - \$500,000	0.08%
\$500,000 - \$1,000,000	0.11%
\$1,000,000 - \$2,500,000	0.20%
\$2,500,000 - \$5,000,000	0.28%
\$5,000,000 and above	0.40%

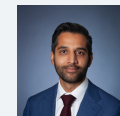
MANAGEMENT TEAM



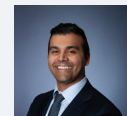
Robert Swanson



Grant Connor



Ali Pervez



Bunty Mahairhu

CI Global Equity & Income Fund

Series P CAD



AS AT MARCH 31, 2025

PORTFOLIO ALLOCATIONS⁵

Asset allocation	(%)	Sector allocation	(%)	Geographic allocation	(%)
International Equity	24.46	Fixed Income	44.82	Canada	44.95
Canadian Corporate Bonds	21.70	Financial Services	11.48	United States	22.72
Canadian Government Bonds	19.29	Technology	8.38	Multi-National	7.35
US Equity	18.32	Other	8.12	United Kingdom	7.26
Other	7.08	Mutual Fund	7.35	Other	4.53
Foreign Government Bonds	4.24	Industrial Goods	5.10	Germany	4.40
Canadian Equity	2.05	Consumer Goods	4.85	France	3.88
Cash and Equivalents	1.61	Consumer Services	4.29	Netherlands	1.82
Foreign Corporate Bonds	1.03	Healthcare	3.54	Italy	1.76
Canadian Bonds - Other	0.22	Telecommunications	2.07	Japan	1.33

UNDERLYING FUND ALLOCATIONS

	Sector	(%)
1. CI Canadian Core Plus Bond Fund (Class I units)	Fixed Income	42.33%
2. CI Global Dividend Opportunities Fund Class I	Mutual Fund	36.65%
3. CI International Equity Growth Private Pool I	Mutual Fund	6.24%
4. Ci Private Market Growth Fund (Series I)	Mutual Fund	4.74%
5. CI Canadian Long-Term Bond Pool Class I	Fixed Income	4.34%
6. CI Canadian Short-Term Bond Pool Class I	Fixed Income	3.41%
7. Ci Private Markets Income Fund (Series I)	Mutual Fund	2.24%
8. CASH	Cash and Cash Equivalent	0.00%

TOP HOLDINGS

	Sector	(%)
1. Ci Private Market Growth Fund (Series I)	Other	4.74%
2. Ci Private Markets Income Fund (Series I)	Other	2.24%
3. Canada Government 1.50% 01-Dec-2031	Fixed Income	1.80%
4. Canada Government 3.00% 01-Jun-2034	Fixed Income	1.74%
5. Canada Housing Trust No 1 4.25% 15-Mar-2034	Fixed Income	1.70%
6. Constellation Software Inc - Debenture Sr 1	Information Technology	1.70%
7. Microsoft Corp	Information Technology	1.61%
8. 407 International Inc 5.75% 14-Feb-2036	Fixed Income	1.52%
9. Canada Housing Trust No 1 1.10% 15-Mar-2031	Fixed Income	1.43%
10. Deutsche Telekom AG CI N	Diversified Telecommunications	1.31%
11. Canada Government 2.50% 01-Dec-2032	Fixed Income	1.27%
12. Canada Government 2.75% 01-Dec-2055	Fixed Income	1.24%
13. Canada Government 1.75% 01-Dec-2053	Fixed Income	1.21%
14. AstraZeneca PLC	Drugs	1.20%
15. NVIDIA Corp	Computer Electronics	1.18%

Note: This page is not complete without disclaimers on the next page.

Over 35,000 financial advisors have chosen CI Global Asset Management as a partner. We believe that Canadians have the best opportunity for investments success by using the services of a professional financial advisor. [Learn more at ci.com](https://www.ci.com).

¹ The risk level of a fund has been determined in accordance with a standardized risk classification methodology in National Instrument 81-102, that is based on the fund's historical volatility as measured by the 10-year standard deviation of the fund's returns. Where a fund has offered securities to the public for less than 10 years, the standardized methodology requires that the standard deviation of a reference mutual fund or index that reasonably approximates the fund's standard deviation be used to determine the fund's risk rating. Please note that historical performance may not be indicative of future returns and a fund's historical volatility may not be indicative of future volatility.

² Commissions, trailing commissions, management fees and expenses all may be associated with mutual fund investments. Please read the prospectus before investing. The indicated rates of return are the historical annual compounded total returns net of fees and expenses payable by the fund (except for figures of one year or less, which are simple total returns) including changes in security value and reinvestment of all dividends/distributions and do not take into account sales, redemption, distribution or optional charges or income taxes payable by any securityholder that would have reduced returns. Mutual funds are not guaranteed, their values change frequently, and past performance may not be repeated.

³ Please refer to the fund's simplified prospectus for distribution information.

⁴ CI Preferred Pricing fee reductions apply to management and administration fees and start at \$100,000.

⁵ Portfolio allocations will fluctuate over the life of the mutual fund as the portfolio holdings and market value of each security changes. The portfolio manager(s) may change the portfolio allocations in some or all of the sectors.

The contents are not to be used or construed as investment advice or as an endorsement or recommendation of any entity of security discussed.

Certain statements contained in this communication are based in whole or in part on information provided by third parties and CI has taken reasonable steps to ensure their accuracy.

The rates of return are used only to illustrate the effects of the compound growth rate and are not intended to reflect future values or returns on investment in an investment fund.

The "Growth of \$10,000 invested" chart shows the final value of a hypothetical \$10,000 investment in securities in this class/series of the fund as at the end of the investment period indicated and is not intended to reflect future values or returns on investment in such securities.

Management Expense Ratio ("MER") represents the trailing 12-month management expense ratio, which reflects the cost of running the fund, inclusive of applicable taxes including HST, GST and QST (excluding commissions and other portfolio transaction costs) as a percentage of daily average net asset value the period, including the fund's proportionate share of any underlying fund(s) expenses, if applicable. The MER is reported in each fund's Management Report of Fund Performance ("MRFP"). MRFPs can be found within the Documents tab on ci.com.

CI Global Asset Management is a registered business name of CI Investments Inc.

©CI Investments Inc. 2024. All rights reserved.

Published April 2025