

CI North American Dividend Fund

Series E CAD



AS AT MAY 31, 2025

FUND OVERVIEW

CI North American Dividend Fund's investment objective is to seek a balance of current income and long-term capital appreciation by investing primarily in a diversified portfolio of dividend-paying and/or distribution-paying North American equity and income securities, including income trusts and common and preferred shares and, to a lesser extent, interest bearing securities, such as bonds, bills or bankers' acceptances.

FUND DETAILS

Inception date	November 2019
CAD Total net assets (\$CAD) As at 2025-05-30	\$718.6 million
NAVPS	\$13.8088
MER (%) As at 2024-09-30	2.40
Management fee (%)	1.85
Asset class	Canadian Dividend
Currency	CAD
Minimum investment	\$100,000 initial/\$5,000 additional
Distribution frequency	Monthly
Last distribution	\$0.0274

Risk rating¹



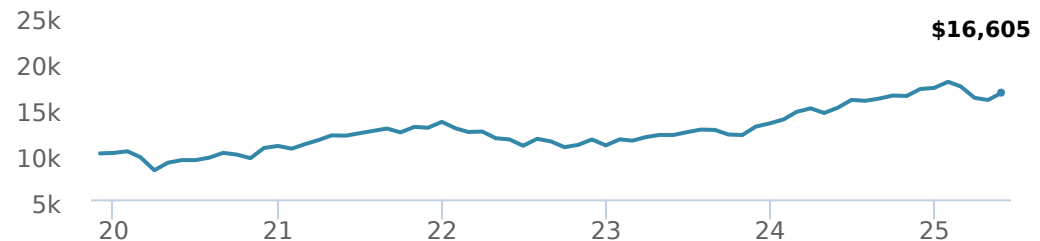
FUND CODES

	T6	T8
E	16087	
A	ISC 50227 DSC 50327 DSC 50127 LL 50027 LL 50427	ISC 11648 DSC 11698 LL 11998
B	DSC SO* 51227 LL SO 53227 LL 52227	
B8	DSC SO 51877 LL SO 53877 LL 52877	
D	11098	
EF	15087	
F	54227	54877
I	55227	
O	18087	
P	58227	58877

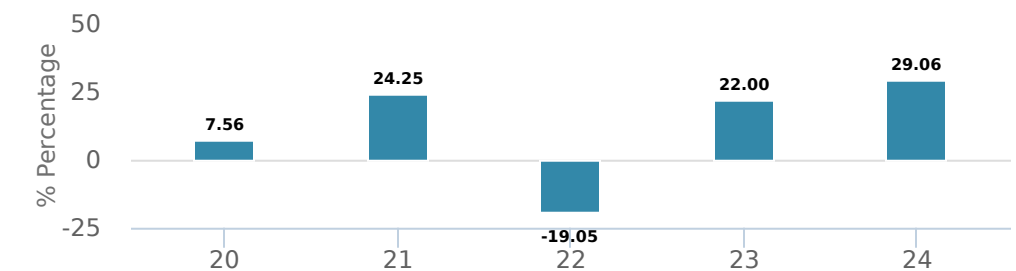
*No new purchases directly into switch only funds.

PERFORMANCE²

Growth of \$10,000 (since inception date)



Calendar year performance



Average annual compound returns

YTD	1 Mo	3 Mo	6 Mo	1 Y	3 Y	5 Y	10 Y	Inception*
-2.99%	5.04%	-3.92%	-2.32%	10.86%	12.97%	12.35%	-	9.61%

*Since inception date

DISTRIBUTION HISTORY³

Payable date	Total	Payable date	Total
2025-05-23	0.0274	2024-12-20	0.2185
2025-04-25	0.0274	2024-11-22	0.0274
2025-03-28	0.0274	2024-10-25	0.0274
2025-02-21	0.0274	2024-09-27	0.0274
2025-01-24	0.0274	2024-08-23	0.0274

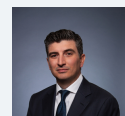
CI PREFERRED PRICING⁴

Investment amount	Combined fee reduction
\$100,000 - \$250,000	0.05%
\$250,000 - \$500,000	0.20%
\$500,000 - \$1,000,000	0.30%
\$1,000,000 - \$2,500,000	0.35%
\$2,500,000 and above	0.45%

MANAGEMENT TEAM



Peter Hofstra



Jeremy Rosa

Note: This page is not complete without disclaimers on the next page.

CI North American Dividend Fund

Series E CAD



AS AT MAY 31, 2025

PORTFOLIO ALLOCATIONS⁵

Asset allocation	(%)	Sector allocation	(%)	Geographic allocation	(%)
US Equity	72.73	Technology	39.55	United States	72.65
Canadian Equity	19.21	Healthcare	14.55	Canada	19.02
International Equity	8.31	Financial Services	14.38	Taiwan	2.46
Derivatives	0.01	Consumer Services	13.54	United Kingdom	1.98
Other	0.01	Industrial Goods	5.66	Israel	1.96
Cash and Equivalents	-0.27	Industrial Services	5.52	Ireland	1.91
		Real Estate	5.27	Multi-National	0.01
		Consumer Goods	1.68	Other	0.01
		Energy	0.07		
		Other	-0.22		

UNDERLYING FUND ALLOCATIONS

	Sector	(%)
1. Microsoft Corp	Information Technology	7.33%
2. NVIDIA Corp	Computer Electronics	7.24%
3. Alphabet Inc Cl A	Information Technology	4.34%
4. Amazon.com Inc	Retail	4.32%
5. Mastercard Inc Cl A	Diversified Financial Services	3.58%
6. Royal Bank of Canada	Banking	3.31%
7. WSP Global Inc	Construction	3.25%
8. S&P Global Inc	Professional Services	3.25%
9. Constellation Software Inc	Information Technology	3.20%
10. Meta Platforms Inc Cl A	Information Technology	3.14%
11. Broadcom Inc	Computer Electronics	3.10%
12. Booking Holdings Inc	Leisure	2.94%
13. Costco Wholesale Corp	Retail	2.79%
14. UnitedHealth Group Inc	Healthcare Services	2.69%
15. JPMorgan Chase & Co	Banking	2.63%

TOP HOLDINGS⁶

	Sector	(%)
1. Microsoft Corp	Information Technology	7.46%
2. NVIDIA Corp	Computer Electronics	7.38%
3. Alphabet Inc Cl A	Information Technology	4.46%
4. Amazon.com Inc	Retail	4.43%
5. Mastercard Inc Cl A	Diversified Financial Services	3.58%
6. WSP Global Inc	Construction	3.37%
7. S&P Global Inc	Professional Services	3.37%
8. Royal Bank of Canada	Banking	3.31%
9. Constellation Software Inc	Information Technology	3.29%
10. Broadcom Inc	Computer Electronics	3.23%
11. Meta Platforms Inc Cl A	Information Technology	3.14%
12. Booking Holdings Inc	Leisure	3.01%
13. Costco Wholesale Corp	Retail	2.79%
14. UnitedHealth Group Inc	Healthcare Services	2.76%
15. JPMorgan Chase & Co	Banking	2.63%

Note: This page is not complete without disclaimers on the next page.

Over 35,000 financial advisors have chosen CI Global Asset Management as a partner. We believe that Canadians have the best opportunity for investments success by using the services of a professional financial advisor. [Learn more at ci.com.](#)

¹ The risk level of a fund has been determined in accordance with a standardized risk classification methodology in National Instrument 81-102, that is based on the fund's historical volatility as measured by the 10-year standard deviation of the fund's returns. Where a fund has offered securities to the public for less than 10 years, the standardized methodology requires that the standard deviation of a reference mutual fund or index that reasonably approximates the fund's standard deviation be used to determine the fund's risk rating. Please note that historical performance may not be indicative of future returns and a fund's historical volatility may not be indicative of future volatility.

² Commissions, trailing commissions, management fees and expenses all may be associated with mutual fund investments. Please read the prospectus before investing. The indicated rates of return are the historical annual compounded total returns net of fees and expenses payable by the fund (except for figures of one year or less, which are simple total returns) including changes in security value and reinvestment of all dividends/distributions and do not take into account sales, redemption, distribution or optional charges or income taxes payable by any securityholder that would have reduced returns. Mutual funds are not guaranteed, their values change frequently, and past performance may not be repeated.

³ Please refer to the fund's simplified prospectus for distribution information.

⁴ CI Preferred Pricing fee reductions apply to management and administration fees and start at \$100,000.

⁶ The portfolio holdings are subject to change without notice and may only represent a small percentage of portfolio holdings. They are not recommendations to buy or sell any particular security.

The contents are not to be used or construed as investment advice or as an endorsement or recommendation of any entity of security discussed.

Certain statements contained in this communication are based in whole or in part on information provided by third parties and CI has taken reasonable steps to ensure their accuracy.

The rates of return are used only to illustrate the effects of the compound growth rate and are not intended to reflect future values or returns on investment in an investment fund.

The "Growth of \$10,000 invested" chart shows the final value of a hypothetical \$10,000 investment in securities in this class/series of the fund as at the end of the investment period indicated and is not intended to reflect future values or returns on investment in such securities.

Management Expense Ratio ("MER") represents the trailing 12-month management expense ratio, which reflects the cost of running the fund, inclusive of applicable taxes including HST, GST and QST (excluding commissions and other portfolio transaction costs) as a percentage of daily average net asset value the period, including the fund's proportionate share of any underlying fund(s) expenses, if applicable. The MER is reported in each fund's Management Report of Fund Performance ("MRFP"). MRFPs can be found within the Documents tab on ci.com.

CI Global Asset Management is a registered business name of CI Investments Inc.

©CI Investments Inc. 2024. All rights reserved.

Published June 2025