

CI Global Core Plus Bond Fund

Series A CAD



AS AT AUGUST 31, 2023

FUND OVERVIEW

This fund invests primarily in a diversified portfolio of government, corporate, and high-yield fixed-income securities, from both Canadian and foreign issuers.

FUND DETAILS

Inception date	December 2015
Total net assets (\$CAD) As at 2023-08-31	\$12.1 million
NAVPS	\$8.4421
MER (%) As at 2023-03-31	1.48
Management fee (%)	1.15
Asset class	Global Fixed Income
Currency	CAD
Minimum investment	\$500 initial/\$25 additional
Distribution frequency	Monthly
Last distribution	\$0.0200
Average Credit Rating	A-

Risk rating¹



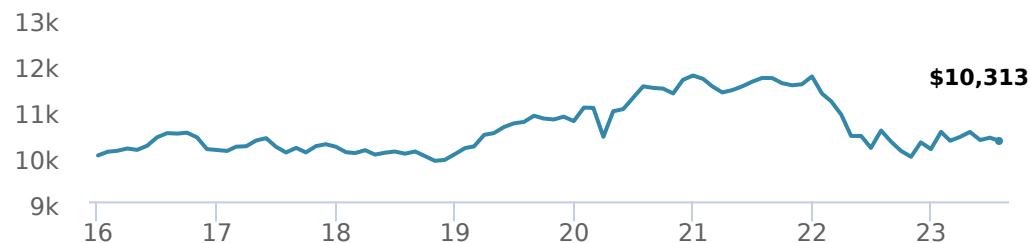
FUND CODES

A	ISC 2345 DSC SO* 3345 LL SO 1345
E	16072
EF	15072
F	4345
I	5345
O	18072
P	90181

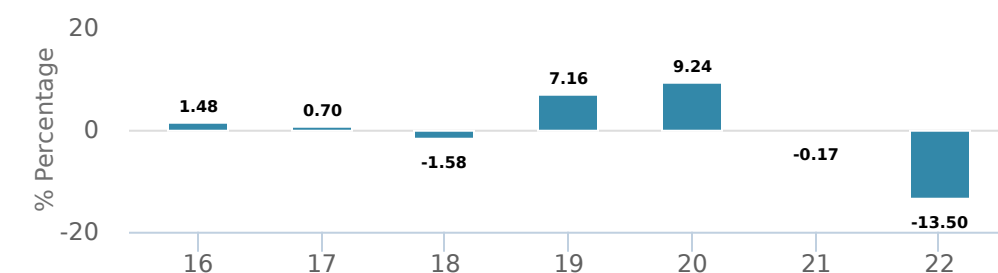
*No new purchases directly into switch only funds.

PERFORMANCE²

Growth of \$10,000 (since inception date)



Calendar year performance



Average annual compound returns

YTD	1 Mo	3 Mo	6 Mo	1 Y	3 Y	5 Y	10 Y	Inception*
1.14%	-0.60%	-0.81%	-0.65%	-0.45%	-3.67%	0.33%	-	0.32%

*Since inception date

DISTRIBUTION HISTORY³

Payable date	Total	Payable date	Total
2023-08-25	0.0200	2023-03-24	0.0200
2023-07-28	0.0200	2023-02-24	0.0200
2023-06-23	0.0200	2023-01-27	0.0200
2023-05-26	0.0200	2022-12-16	0.0439
2023-04-21	0.0200	2022-11-25	0.0200

CI PREFERRED PRICING⁴

Investment amount	Combined fee reduction
\$100,000 and above	0.10%
\$500,000 and above	0.11%
\$1,000,000 and above	0.18%
\$2,500,000 and above	0.22%
\$5,000,000 and above	0.29%

FUND CHARACTERISTICS

Average Coupon %	4.03
Duration	6.98
Yield	6.07

RATING SUMMARY (%)

AAA	12.27
AA	20.25
A	18.30
BBB	38.64
BB	6.81
B	2.78
NR	0.38
Average Credit Rating	A-

*Corporate and Government bonds only.

AS AT AUGUST 31, 2023

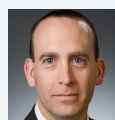
PORTFOLIO ALLOCATIONS⁵

Asset allocation	(%)	Sector allocation	(%)	Geographic allocation	(%)
Canadian Corporate Bonds	33.54	Fixed Income	89.57	Canada	74.61
Canadian Government Bonds	30.05	Financial Services	3.21	United States	17.39
Foreign Corporate Bonds	14.36	Cash and Cash Equivalent	2.47	Other	5.22
Foreign Government Bonds	8.89	Energy	1.78	Multi-National	0.53
Canadian Equity	7.39	Telecommunications	1.26	Cayman Islands	0.53
Cash and Equivalents	2.47	Utilities	0.73	Mexico	0.39
Canadian Bonds - Other	1.71	Mutual Fund	0.55	Indonesia	0.36
Mortgages	1.03	Real Estate	0.25	Turkey	0.36
US Equity	0.56	Consumer Services	0.10	United Kingdom	0.32
		Other	0.08	Qatar	0.29

TOP HOLDINGS

	Sector	(%)
1. iShares JPMorgan USD EM Bond ETF (EMB)	Exchange Traded Fund	7.03%
2. Ontario Province 2.65% 02-Dec-2050	Fixed Income	6.04%
3. Ontario Province 3.65% 02-Jun-2033	Fixed Income	3.40%
4. New Brunswick Province 3.05% 14-Aug-2050	Fixed Income	2.40%
5. Canada Government 2.00% 01-Dec-2051	Fixed Income	2.06%
6. Ontario Province 2.90% 02-Jun-2049	Fixed Income	1.68%
7. Ontario Province 3.75% 02-Jun-2032	Fixed Income	1.60%
8. Alberta Province 2.55% 01-Jun-2027	Fixed Income	1.44%
9. Enbridge Inc 5.50% 15-Jul-2077	Fixed Income	1.35%
10. Canada Government 4.00% 01-Jun-2041	Fixed Income	1.23%
11. Manitoba Province 2.05% 05-Sep-2052	Fixed Income	1.15%
12. Canada Government 1.75% 01-Dec-2053	Fixed Income	0.97%
13. Canadian Western Bank 6.00% 30-Apr-2081	Fixed Income	0.82%
14. Canada Government 4.25% 01-Dec-2026	Fixed Income	0.81%
15. Ontario Province 2.90% 02-Jun-2028	Fixed Income	0.80%

MANAGEMENT TEAM



Geoff Marshall



John Shaw



James Dutkiewicz

Over 35,000 financial advisors have chosen CI Global Asset Management as a partner. We believe that Canadians have the best opportunity for investments success by using the services of a professional financial advisor. [Learn more at ci.com.](#)

¹ The risk level of a fund has been determined in accordance with a standardized risk classification methodology in National Instrument 81-102, that is based on the fund's historical volatility as measured by the 10-year standard deviation of the fund's returns. Where a fund has offered securities to the public for less than 10 years, the standardized methodology requires that the standard deviation of a reference mutual fund or index that reasonably approximates the fund's standard deviation be used to determine the fund's risk rating. Please note that historical performance may not be indicative of future returns and a fund's historical volatility may not be indicative of future volatility.

² Commissions, trailing commissions, management fees and expenses all may be associated with mutual fund investments. Please read the prospectus before investing. The indicated rates of return are the historical annual compounded total returns net of fees and expenses payable by the fund (except for figures of one year or less, which are simple total returns) including changes in security value and reinvestment of all dividends/distributions and do not take into account sales, redemption, distribution or optional charges or income taxes payable by any securityholder that would have reduced returns. Mutual funds are not guaranteed, their values change frequently, and past performance may not be repeated.

³ Please refer to the fund's simplified prospectus for distribution information.

⁴ CI Preferred Pricing fee reductions apply to management and administration fees and start at \$100,000.

⁵ Portfolio allocations will fluctuate over the life of the mutual fund as the portfolio holdings and market value of each security changes. The portfolio manager(s) may change the portfolio allocations in some or all of the sectors.

The contents are not to be used or construed as investment advice or as an endorsement or recommendation of any entity of security discussed.

Certain statements contained in this communication are based in whole or in part on information provided by third parties and CI has taken reasonable steps to ensure their accuracy.

The rates of return are used only to illustrate the effects of the compound growth rate and are not intended to reflect future values or returns on investment in an investment fund.

The "Growth of \$10,000 invested" chart shows the final value of a hypothetical \$10,000 investment in securities in this class/series of the fund as at the end of the investment period indicated and is not intended to reflect future values or returns on investment in such securities.

Management Expense Ratio ("MER") represents the trailing 12-month management expense ratio, which reflects the cost of running the fund, inclusive of applicable taxes including HST, GST and QST (excluding commissions and other portfolio transaction costs) as a percentage of daily average net asset value the period, including the fund's proportionate share of any underlying fund(s) expenses, if applicable. The MER is reported in each fund's Management Report of Fund Performance ("MRFP"). MRFPs can be found within the Documents tab on ci.com.

CI Global Asset Management is a registered business name of CI Investments Inc.

©CI Investments Inc. 2023. All rights reserved.

Published September 2023