

# CI Gold Corporate Class

Series F USD



AS AT OCTOBER 31, 2024

## FUND OVERVIEW

This fund invests primarily in gold and equity securities that provide exposure to gold. The fund may also invest in silver, platinum and palladium.

## FUND DETAILS

Inception date	December 2010
CAD Total net assets (\$CAD) As at 2024-10-30	\$46.2 million
NAVPS	\$11.2155
MER (%) As at 2024-03-31	1.41
Management fee (%)	0.90
Asset class	Sector Equity
Currency	USD
Minimum investment	\$500 initial/\$25 additional
Distribution frequency	Quarterly
Last distribution	\$0.0722

## Risk rating<sup>1</sup>

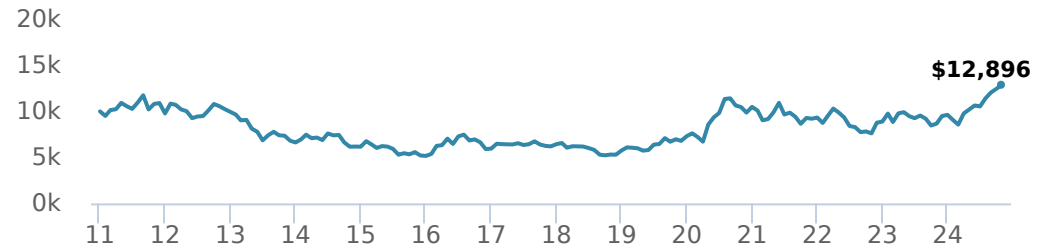


## FUND CODES

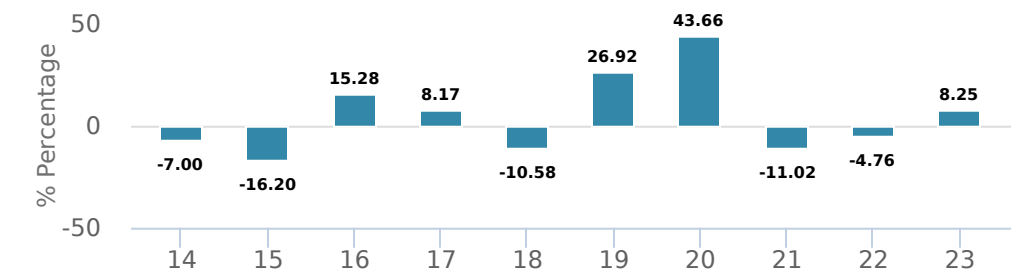
F	4379
A	ISC 2379 DSC 3379 LL 1379
E	17145
O	19145
P	90420

## PERFORMANCE<sup>2</sup>

### Growth of \$10,000 (since inception date)



### Calendar year performance



### Average annual compound returns

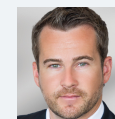
YTD	1 Mo	3 Mo	6 Mo	1 Y	3 Y	5 Y	10 Y	Inception*
33.97%	3.50%	12.83%	26.42%	48.68%	11.56%	13.09%	7.67%	1.85%

\*Since inception date

## DISTRIBUTION HISTORY<sup>3</sup>

Payable date	Total	Payable date	Total
2024-03-22	0.0722	2020-09-25	0.0680
2023-03-24	0.0912	2020-06-26	0.0229
2022-03-25	0.2769	2020-03-20	0.1429
2021-03-26	0.3260	2017-03-31	0.0046
2020-12-18	0.0957	2016-03-24	0.0129

## MANAGEMENT TEAM



Jon Case

AS AT OCTOBER 31, 2024

## PORTFOLIO ALLOCATIONS<sup>4</sup>

Asset allocation	(%)	Sector allocation	(%)	Geographic allocation	(%)
Canadian Equity	<b>47.74</b>	Basic Materials	<b>53.02</b>	Canada	<b>48.82</b>
Commodities	<b>38.97</b>	Exchange Traded Fund	<b>31.96</b>	Multi-National	<b>31.96</b>
International Equity	<b>6.92</b>	Other	<b>13.94</b>	Other	<b>13.94</b>
US Equity	<b>5.28</b>	Cash and Cash Equivalent	<b>1.08</b>	United States	<b>5.28</b>
Cash and Equivalents	<b>1.08</b>				
Other	<b>0.01</b>				

## TOP HOLDINGS

	Sector	(%)
1. iShares Gold Trust ETF (IAU)	Exchange Traded Fund	<b>9.15%</b>
2. Iamgold Corp	Gold and Precious Metals	<b>9.10%</b>
3. Barrick Gold Corp	Gold and Precious Metals	<b>9.06%</b>
4. SPDR Gold MiniShares Trust ETF (GLDM)	Exchange Traded Fund	<b>7.92%</b>
5. SPDR Gold Shares ETF (GLD)	Exchange Traded Fund	<b>7.49%</b>
6. iShares Silver Trust ETF (SLV)	Exchange Traded Fund	<b>7.40%</b>
7. Agnico Eagle Mines Ltd	Gold and Precious Metals	<b>7.14%</b>
8. CI Gold Bullion Fund ETF US\$ Series (VALT.U)	Exchange Traded Fund	<b>7.01%</b>
9. Spartan Resources Ltd/Australia	Other	<b>6.92%</b>
10. Sandstorm Gold Ltd	Gold and Precious Metals	<b>6.71%</b>
11. Wheaton Precious Metals Corp	Gold and Precious Metals	<b>6.49%</b>
12. Newmont Corp	Gold and Precious Metals	<b>5.28%</b>
13. K92 Mining Inc	Gold and Precious Metals	<b>4.67%</b>
14. Osisko Gold Royalties Ltd	Gold and Precious Metals	<b>2.49%</b>
15. Skeena Resources Ltd	Metals and Mining	<b>2.08%</b>

**Over 35,000 financial advisors have chosen CI Global Asset Management as a partner. We believe that Canadians have the best opportunity for investments success by using the services of a professional financial advisor. [Learn more at ci.com.](#)**

<sup>1</sup> The risk level of a fund has been determined in accordance with a standardized risk classification methodology in National Instrument 81-102, that is based on the fund's historical volatility as measured by the 10-year standard deviation of the fund's returns. Where a fund has offered securities to the public for less than 10 years, the standardized methodology requires that the standard deviation of a reference mutual fund or index that reasonably approximates the fund's standard deviation be used to determine the fund's risk rating. Please note that historical performance may not be indicative of future returns and a fund's historical volatility may not be indicative of future volatility.

<sup>2</sup> Commissions, trailing commissions, management fees and expenses all may be associated with mutual fund investments. Please read the prospectus before investing. The indicated rates of return are the historical annual compounded total returns net of fees and expenses payable by the fund (except for figures of one year or less, which are simple total returns) including changes in security value and reinvestment of all dividends/distributions and do not take into account sales, redemption, distribution or optional charges or income taxes payable by any securityholder that would have reduced returns. Mutual funds are not guaranteed, their values change frequently, and past performance may not be repeated.

<sup>3</sup> Please refer to the fund's simplified prospectus for distribution information.

<sup>4</sup> Portfolio allocations will fluctuate over the life of the mutual fund as the portfolio holdings and market value of each security changes. The portfolio manager(s) may change the portfolio allocations in some or all of the sectors.

The contents are not to be used or construed as investment advice or as an endorsement or recommendation of any entity of security discussed.

Certain statements contained in this communication are based in whole or in part on information provided by third parties and CI has taken reasonable steps to ensure their accuracy.

The rates of return are used only to illustrate the effects of the compound growth rate and are not intended to reflect future values or returns on investment in an investment fund.

The "Growth of \$10,000 invested" chart shows the final value of a hypothetical \$10,000 investment in securities in this class/series of the fund as at the end of the investment period indicated and is not intended to reflect future values or returns on investment in such securities.

Management Expense Ratio ("MER") represents the trailing 12-month management expense ratio, which reflects the cost of running the fund, inclusive of applicable taxes including HST, GST and QST (excluding commissions and other portfolio transaction costs) as a percentage of daily average net asset value the period, including the fund's proportionate share of any underlying fund(s) expenses, if applicable. The MER is reported in each fund's Management Report of Fund Performance ("MRFP"). MRFPs can be found within the Documents tab on ci.com.

CI Global Asset Management is a registered business name of CI Investments Inc.

©CI Investments Inc. 2024. All rights reserved.

Published November 2024