

CI Global Bond Fund

Series A USD



AS AT AUGUST 31, 2023

FUND OVERVIEW

This fund invests primarily in fixed income and floating rate securities of governments and companies throughout the world.

FUND DETAILS

Inception date	August 1992
Total net assets (\$CAD) As at 2023-08-31	\$227.3 million
NAVPS	\$2.5120
MER (%) As at 2023-03-31	1.56
Management fee (%)	1.20
Asset class	Global Fixed Income
Currency	USD
Minimum investment	\$500 initial/\$25 additional
Distribution frequency	Monthly
Last distribution	\$0.0019
Average Credit Rating	A+

Risk rating¹



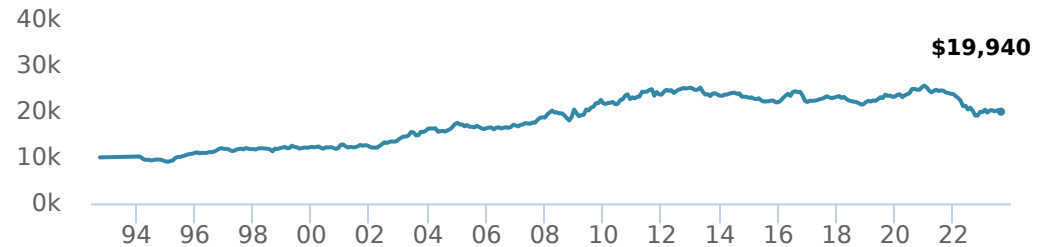
FUND CODES

A	ISC 110 DSC SO* 540 LL SO 1540
F	529
P	90464

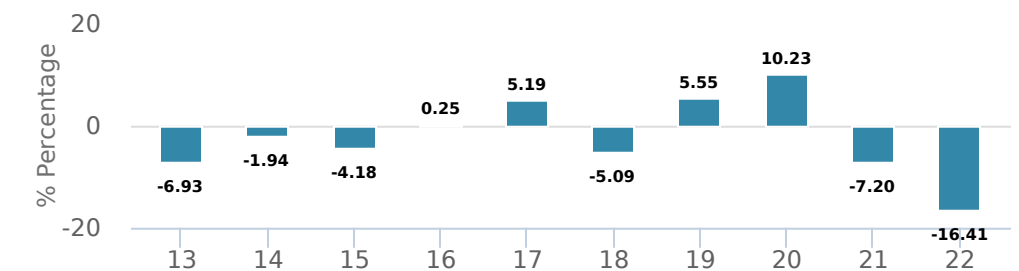
*No new purchases directly into switch only funds.

PERFORMANCE²

Growth of \$10,000 (since inception date)



Calendar year performance



Average annual compound returns

YTD	1 Mo	3 Mo	6 Mo	1 Y	3 Y	5 Y	10 Y	Inception*
0.38%	-1.90%	-0.29%	0.99%	-0.84%	-7.11%	-1.98%	-1.56%	2.25%

*Since inception date

DISTRIBUTION HISTORY³

Payable date	Total	Payable date	Total
2023-08-25	0.0019	2023-03-24	0.0030
2023-07-28	0.0047	2023-02-24	0.0018
2023-06-23	0.0026	2023-01-27	0.0033
2023-05-26	0.0032	2022-12-16	0.0288
2023-04-21	0.0019	2022-11-25	0.0736

FUND CHARACTERISTICS

Average Coupon %	2.61
Duration	6.17
Yield	4.64

RATING SUMMARY (%)

AAA	44.06
AA	12.86
A	15.07
BBB	16.12
BB	8.17
B	2.38
CC	0.08
NR	0.05
Average Credit Rating	A+

*Corporate and Government bonds only.

AS AT AUGUST 31, 2023

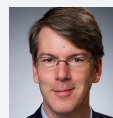
PORTFOLIO ALLOCATIONS⁴

Asset allocation	(%)	Sector allocation	(%)	Geographic allocation	(%)
Foreign Government Bonds	58.25	Fixed Income	93.73	United States	46.21
Foreign Corporate Bonds	22.87	Cash and Cash Equivalent	6.34	Canada	13.45
Canadian Government Bonds	10.86	Other	-0.07	Other	9.81
Cash and Equivalents	6.34			France	8.77
Canadian Corporate Bonds	1.75			Japan	8.08
Other	-0.07			Germany	4.63
				Australia	3.36
				Europe	2.79
				United Kingdom	1.67
				Dominican Republic	1.23

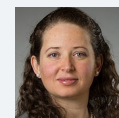
TOP HOLDINGS

	Sector	(%)
1. CI Emerging Markets Bond Fund Series I	Mutual Fund	10.21%
2. Canada Government 2.75% 01-Aug-2024	Fixed Income	5.18%
3. France Government 0.00% 25-Nov-2030	Fixed Income	4.84%
4. United States Treasury 0.75% 15-Nov-2024	Fixed Income	4.58%
5. United States Treasury 3.63% 31-May-2028	Fixed Income	4.49%
6. France Government 0.00% 25-Nov-2031	Fixed Income	3.36%
7. Cad Cash Sweep	Cash and Cash Equivalent	2.83%
8. Australia Government 0.25% 21-Nov-2024	Fixed Income	2.78%
9. Japan Government 0.10% 20-Mar-2031	Fixed Income	2.60%
10. United States Treasury 4.00% 30-Jun-2028	Fixed Income	2.56%
11. Japan Government 0.10% 20-Dec-2030	Fixed Income	2.16%
12. Canada Government 3.00% 01-Nov-2024	Fixed Income	2.11%
13. Germany Government 2.40% 19-Oct-2028	Fixed Income	2.11%
14. United States Treasury 2.75% 15-Aug-2032	Fixed Income	2.02%
15. United States Treasury 2.25% 15-Feb-2052	Fixed Income	1.87%

MANAGEMENT TEAM



John Shaw



Fernanda Fenton

Over 35,000 financial advisors have chosen CI Global Asset Management as a partner. We believe that Canadians have the best opportunity for investments success by using the services of a professional financial advisor. [Learn more at ci.com.](#)

¹ The risk level of a fund has been determined in accordance with a standardized risk classification methodology in National Instrument 81-102, that is based on the fund's historical volatility as measured by the 10-year standard deviation of the fund's returns. Where a fund has offered securities to the public for less than 10 years, the standardized methodology requires that the standard deviation of a reference mutual fund or index that reasonably approximates the fund's standard deviation be used to determine the fund's risk rating. Please note that historical performance may not be indicative of future returns and a fund's historical volatility may not be indicative of future volatility.

² Commissions, trailing commissions, management fees and expenses all may be associated with mutual fund investments. Please read the prospectus before investing. The indicated rates of return are the historical annual compounded total returns net of fees and expenses payable by the fund (except for figures of one year or less, which are simple total returns) including changes in security value and reinvestment of all dividends/distributions and do not take into account sales, redemption, distribution or optional charges or income taxes payable by any securityholder that would have reduced returns. Mutual funds are not guaranteed, their values change frequently, and past performance may not be repeated.

³ Please refer to the fund's simplified prospectus for distribution information.

⁴ Portfolio allocations will fluctuate over the life of the mutual fund as the portfolio holdings and market value of each security changes. The portfolio manager(s) may change the portfolio allocations in some or all of the sectors.

The contents are not to be used or construed as investment advice or as an endorsement or recommendation of any entity of security discussed.

Certain statements contained in this communication are based in whole or in part on information provided by third parties and CI has taken reasonable steps to ensure their accuracy.

The rates of return are used only to illustrate the effects of the compound growth rate and are not intended to reflect future values or returns on investment in an investment fund.

The "Growth of \$10,000 invested" chart shows the final value of a hypothetical \$10,000 investment in securities in this class/series of the fund as at the end of the investment period indicated and is not intended to reflect future values or returns on investment in such securities.

Management Expense Ratio ("MER") represents the trailing 12-month management expense ratio, which reflects the cost of running the fund, inclusive of applicable taxes including HST, GST and QST (excluding commissions and other portfolio transaction costs) as a percentage of daily average net asset value the period, including the fund's proportionate share of any underlying fund(s) expenses, if applicable. The MER is reported in each fund's Management Report of Fund Performance ("MRFP"). MRFPs can be found within the Documents tab on ci.com.

CI Global Asset Management is a registered business name of CI Investments Inc.

©CI Investments Inc. 2023. All rights reserved.

Published September 2023