

CI Global Bond Corporate Class

Series A CAD



AS AT MARCH 31, 2025

FUND OVERVIEW

This fund invests in units of CI Global Bond Fund.

FUND DETAILS

Inception date	August 2002
CAD Total net assets (\$CAD) As at 2025-03-28	\$10.3 million
NAVPS	\$10.9266
MER (%) As at 2024-09-30	1.54
Management fee (%)	1.20
Asset class	Global Fixed Income
Currency	CAD
Minimum investment	\$500 initial/\$25 additional
Distribution frequency	Quarterly
Last distribution	\$0.0416
Average Credit Rating	A+

Risk rating¹

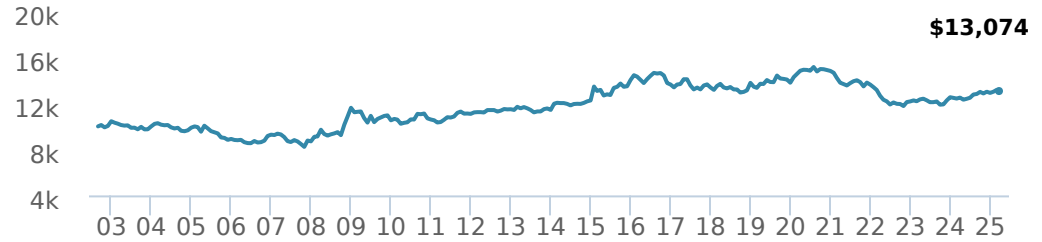


FUND CODES

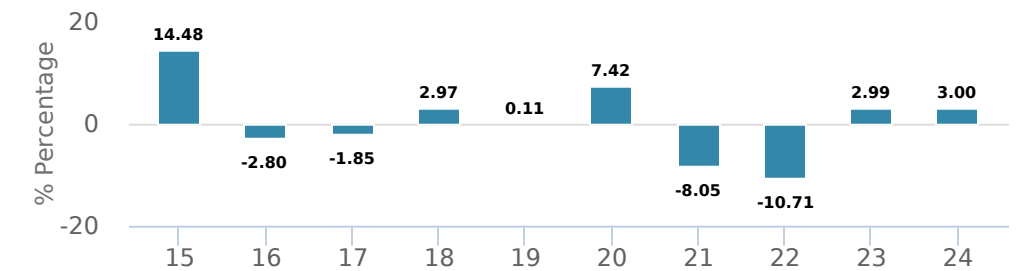
	T5	T8
A	ISC 2302 DSC 3302 LL 1302 LL 6352	ISC 166T5 DSC 266T5 LL 366T5
E	16125	16725
EF	15125	15725
F	4302	966T8
I	5326	066T8
O	18125	18725
P	90114	

PERFORMANCE²

Growth of \$10,000 (since inception date)



Calendar year performance



Average annual compound returns

YTD	1 Mo	3 Mo	6 Mo	1 Y	3 Y	5 Y	10 Y	Inception [*]
1.26%	-0.73%	1.26%	0.56%	4.54%	1.07%	-2.50%	-0.08%	1.19%

^{*}Since inception date

DISTRIBUTION HISTORY³

Payable date	Total	Payable date	Total
2021-03-26	0.0416	2017-03-31	0.6373
2020-12-18	0.1497	2016-03-24	0.7106
2020-09-25	0.1470	2015-03-27	0.1724
2020-06-26	0.1123	2014-03-28	0.0436
2020-03-20	0.2547	2012-12-14	0.0320

CI PREFERRED PRICING⁴

Investment amount	Combined fee reduction
\$100,000 - \$500,000	0.05%
\$500,000 - \$1,000,000	0.16%
\$1,000,000 - \$2,500,000	0.24%
\$2,500,000 - \$5,000,000	0.28%
\$5,000,000 and above	0.35%

FUND CHARACTERISTICS

Average Coupon %	3.43
Duration	6.30
Yield	4.37

RATING SUMMARY (%)

AAA	39.97
AA	7.91
A	21.32
BBB	16.96
BB	9.32
B	2.91
NR	0.03
Average Credit Rating	A+

^{*}Corporate and Government bonds only.

AS AT MARCH 31, 2025

PORTFOLIO ALLOCATIONS⁵

Asset allocation	(%)	Sector allocation	(%)	Geographic allocation	(%)
Foreign Government Bonds	58.75	Fixed Income	95.94	United States	42.50
Foreign Corporate Bonds	26.56	Cash and Cash Equivalent	3.77	Other	12.97
Canadian Government Bonds	9.74	Financial Services	0.22	Canada	12.48
Cash and Equivalents	3.77	Exchange Traded Fund	0.09	Germany	9.80
Canadian Corporate Bonds	0.98	Other	-0.02	Spain	6.64
US Equity	0.22			Japan	6.16
Other	-0.02			Australia	3.11
				France	2.90
				Europe	2.04
				Indonesia	1.40

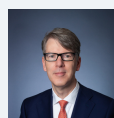
UNDERLYING FUND ALLOCATIONS

	Sector	(%)
1. CI Global Bond Fund Class I	Fixed Income	99.53%

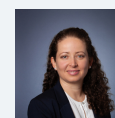
TOP HOLDINGS

	Sector	(%)
1. CI Emerging Markets Bond Fund Series I	Mutual Fund	10.03%
2. United States Treasury 3.63% 31-May-2028	Fixed Income	4.74%
3. Canada Government 3.00% 01-Jun-2034	Fixed Income	3.55%
4. Spain Government 3.25% 30-Apr-2034	Fixed Income	3.47%
5. Germany Government 2.10% 12-Apr-2029	Fixed Income	3.43%
6. France Government 0.00% 25-Nov-2030	Fixed Income	2.90%
7. United States Treasury 4.13% 31-Oct-2026	Fixed Income	2.66%
8. United States Treasury 0.13% 15-Jul-2031	Fixed Income	2.62%
9. Japan Government 0.10% 20-Dec-2030	Fixed Income	2.60%
10. Germany Government 2.20% 15-Feb-2034	Fixed Income	2.55%
11. Spain Government 3.50% 31-May-2029	Fixed Income	2.49%
12. Australia Government 3.00% 21-Nov-2033	Fixed Income	2.41%
13. Germany Government 2.60% 15-Aug-2034	Fixed Income	2.38%
14. Japan Government 0.10% 20-Mar-2031	Fixed Income	2.26%
15. Canada Government 3.25% 01-Nov-2026	Fixed Income	2.12%

MANAGEMENT TEAM



John Shaw



Fernanda Fenton

Over 35,000 financial advisors have chosen CI Global Asset Management as a partner. We believe that Canadians have the best opportunity for investments success by using the services of a professional financial advisor. [Learn more at ci.com](https://www.ci.com).

¹ The risk level of a fund has been determined in accordance with a standardized risk classification methodology in National Instrument 81-102, that is based on the fund's historical volatility as measured by the 10-year standard deviation of the fund's returns. Where a fund has offered securities to the public for less than 10 years, the standardized methodology requires that the standard deviation of a reference mutual fund or index that reasonably approximates the fund's standard deviation be used to determine the fund's risk rating. Please note that historical performance may not be indicative of future returns and a fund's historical volatility may not be indicative of future volatility.

² Commissions, trailing commissions, management fees and expenses all may be associated with mutual fund investments. Please read the prospectus before investing. The indicated rates of return are the historical annual compounded total returns net of fees and expenses payable by the fund (except for figures of one year or less, which are simple total returns) including changes in security value and reinvestment of all dividends/distributions and do not take into account sales, redemption, distribution or optional charges or income taxes payable by any securityholder that would have reduced returns. Mutual funds are not guaranteed, their values change frequently, and past performance may not be repeated.

³ Please refer to the fund's simplified prospectus for distribution information.

⁴ CI Preferred Pricing fee reductions apply to management and administration fees and start at \$100,000.

⁵ Portfolio allocations will fluctuate over the life of the mutual fund as the portfolio holdings and market value of each security changes. The portfolio manager(s) may change the portfolio allocations in some or all of the sectors.

The contents are not to be used or construed as investment advice or as an endorsement or recommendation of any entity of security discussed.

Certain statements contained in this communication are based in whole or in part on information provided by third parties and CI has taken reasonable steps to ensure their accuracy.

The rates of return are used only to illustrate the effects of the compound growth rate and are not intended to reflect future values or returns on investment in an investment fund.

The "Growth of \$10,000 invested" chart shows the final value of a hypothetical \$10,000 investment in securities in this class/series of the fund as at the end of the investment period indicated and is not intended to reflect future values or returns on investment in such securities.

Management Expense Ratio ("MER") represents the trailing 12-month management expense ratio, which reflects the cost of running the fund, inclusive of applicable taxes including HST, GST and QST (excluding commissions and other portfolio transaction costs) as a percentage of daily average net asset value the period, including the fund's proportionate share of any underlying fund(s) expenses, if applicable. The MER is reported in each fund's Management Report of Fund Performance ("MRFP"). MRFPs can be found within the Documents tab on ci.com.

CI Global Asset Management is a registered business name of CI Investments Inc.

©CI Investments Inc. 2024. All rights reserved.

Published April 2025