

# CI Global Quality Dividend Managed Fund (formerly CI Global High Dividend Advantage Fund)



Series A CAD

AS AT SEPTEMBER 30, 2021

## FUND OVERVIEW

This fund invests primarily in dividend-paying common and preferred shares, debentures, income trusts, equity-related securities and convertible securities of issuers anywhere in the world.

## FUND DETAILS

Inception date	February 2006
Total net assets (\$CAD) As at 2021-09-30	\$296.8 million
NAVPS	\$8.0212
MER (%) As at 2021-03-31	2.54
Management fee (%)	2.10
Asset class	Global Dividend
Currency	CAD
Minimum investment	\$500 initial / \$25 additional
Distribution frequency	Monthly
Last distribution	\$0.0300

## Risk rating<sup>1</sup>

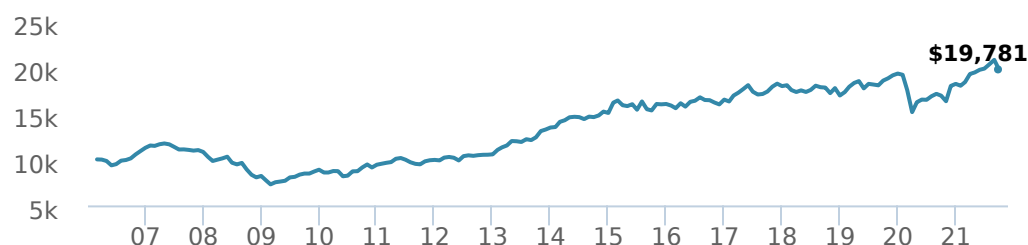


## FUND CODES

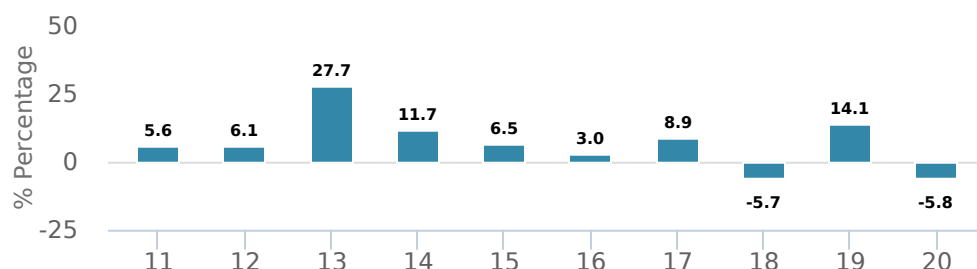
A	ISC 2810 DSC 3810 LL 6976 LL 1610
E	16176
F	4810
I	5810
O	18176

## PERFORMANCE<sup>2</sup>

Growth of \$10,000 (since inception date)



Calendar year performance



Average annual compound returns

YTD	1 Mo	3 Mo	6 Mo	1 Y	3 Y	5 Y	10 Y	Inception*
8.60%	-5.00%	-0.50%	2.60%	16.80%	3.60%	3.80%	7.70%	4.50%

\*Since inception date

## DISTRIBUTION HISTORY<sup>3</sup>

Payable date	Total	Payable date	Total
2021-09-24	0.0300	2021-04-23	0.0300
2021-08-27	0.0300	2021-03-26	0.0300
2021-07-23	0.0300	2021-02-19	0.0300
2021-06-25	0.0300	2021-01-22	0.0300
2021-05-28	0.0300	2020-12-18	0.0300

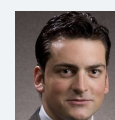
## CI PREFERRED PRICING<sup>4</sup>

Investment amount	Combined fee reduction
\$100,000 - \$500,000	0.18%
\$500,000 - \$1,000,000	0.21%
\$1,000,000 - \$2,500,000	0.30%
\$2,500,000 - \$5,000,000	0.38%
\$5,000,000 and above	0.50%

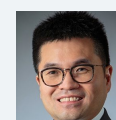
## MANAGEMENT TEAM



CI GAM | Multi-Asset Management, led by portfolio manager Alfred Lam, oversees CI's managed solutions. The team's philosophy is centred on delivering predictable outcomes for investors by utilizing a full set of asset classes while adding value and managing risk through multiple factors. CI GAM | Multi Asset Management is a division of CI Global Asset Management, a subsidiary of CI Financial Corp.



Marchello Holditch



Alfred Lam

# CI Global Quality Dividend Managed Fund (formerly CI Global High Dividend Advantage Fund)



Series A CAD

AS AT SEPTEMBER 30, 2021

## PORTFOLIO ALLOCATIONS<sup>5</sup>

Asset allocation	(%)	Sector allocation	(%)	Geographic allocation	(%)
US Equity	50.57%	Technology	18.27%	United States	50.71%
International Equity	41.91%	Consumer Goods	15.12%	Other	16.97%
Canadian Equity	5.09%	Healthcare	14.15%	Canada	7.03%
Cash and Equivalents	2.07%	Financial Services	12.20%	United Kingdom	6.13%
Income Trust Units	0.38%	Basic Materials	8.54%	Japan	5.73%
Other	-0.02%	Other	7.83%	Taiwan	3.71%
		Industrial Goods	7.59%	Switzerland	3.21%
		Industrial Services	6.78%	Australia	2.81%
		Telecommunications	5.18%	France	1.87%
		Consumer Services	4.34%	Germany	1.83%

## TOP HOLDINGS

	Sector	(%)
1. CI WisdomTree U.S. Quality Di Grw Ix ETF NH(DGR.B)	Exchange Traded Fund	45.70%
2. CI WisdomTree Intl Quality Di Gr Ix ETF NH (IQD.B)	Exchange Traded Fund	29.20%
3. CI WisdomTree Emerging Mkts Div Ix ETF NH (EMV.B)	Exchange Traded Fund	13.23%
4. CI WisdomTree U.S. MidCap Divid Idx ETF NH (UMI.B)	Exchange Traded Fund	5.04%
5. CI WisdomTree Canada Qual Div Grw Ix ETF NH (DGRC)	Exchange Traded Fund	3.01%
6. CI Canadian Banks Income Class ETF (CIC)	Exchange Traded Fund	2.09%

Note: This page is not complete without disclaimers on the next page.

Over 35,000 financial advisors have chosen CI Global Asset Management as a partner. We believe that Canadians have the best opportunity for investments success by using the services of a professional financial advisor. [Learn more at ci.com.](#)

<sup>1</sup> The risk level of a fund has been determined in accordance with a standardized risk classification methodology in National Instrument 81-102, that is based on the fund's historical volatility as measured by the 10-year standard deviation of the fund's returns. Where a fund has offered securities to the public for less than 10 years, the standardized methodology requires that the standard deviation of a reference mutual fund or index that reasonably approximates the fund's standard deviation be used to determine the fund's risk rating. Please note that historical performance may not be indicative of future returns and a fund's historical volatility may not be indicative of future volatility.

<sup>2</sup> Commissions, trailing commissions, management fees and expenses all may be associated with mutual fund investments. Please read the prospectus before investing. The indicated rates of return are the historical annual compounded total returns net of fees and expenses payable by the fund (except for figures of one year or less, which are simple total returns) including changes in security value and reinvestment of all dividends/distributions and do not take into account sales, redemption, distribution or optional charges or income taxes payable by any securityholder that would have reduced returns. Mutual funds are not guaranteed, their values change frequently, and past performance may not be repeated.

<sup>3</sup> Please refer to the fund's simplified prospectus for distribution information.

<sup>4</sup> CI Preferred Pricing fee reductions apply to management and administration fees and start at \$100,000.

<sup>5</sup> Portfolio allocations will fluctuate over the life of the mutual fund as the portfolio holdings and market value of each security changes. The portfolio manager(s) may change the portfolio allocations in some or all of the sectors.

The contents are not to be used or construed as investment advice or as an endorsement or recommendation of any entity of security discussed.

Certain statements contained in this communication are based in whole or in part on information provided by third parties and CI has taken reasonable steps to ensure their accuracy.

The rates of return are used only to illustrate the effects of the compound growth rate and are not intended to reflect future values or returns on investment in an investment fund.

The "Growth of \$10,000" chart shows the final value of a hypothetical \$10,000 investment in securities in this class of the fund as at the end of the investment period indicated and is not intended to reflect future values or returns on investment in such securities.

Management Expense Ratio ("MER") represents the trailing 12-month management expense ratio, which reflects the cost of running the fund, inclusive of applicable taxes including HST, GST and QST (excluding commissions and other portfolio transaction costs) as a percentage of daily average net asset value the period, including the fund's proportionate share of any underlying fund(s) expenses, if applicable. The MER is reported in each fund's Management Report of Fund Performance ("MRFP"). MRFPs can be found within the Documents tab on ci.com.

CI Global Asset Management is a registered business name of CI Investments Inc.

©CI Investments Inc. 2021. All rights reserved.

Published October 2021