

CI U.S. Dividend Fund (formerly Cambridge U.S. Dividend Fund)



Series A USD

AS AT AUGUST 31, 2021

FUND OVERVIEW

This fund invests in an actively managed portfolio of primarily U.S. equities.

FUND DETAILS

Inception date	June 2006
Total net assets (\$CAD) As at 2021-08-31	\$375.0 million
NAVPS	\$17.6605
MER (%) As at 2021-03-31	2.43
Management fee (%)	2.00
Asset class	U.S. Dividend
Currency	USD
Minimum investment	\$500 initial / \$25 additional
Distribution frequency	Monthly
Last distribution	\$0.0159

Risk rating¹

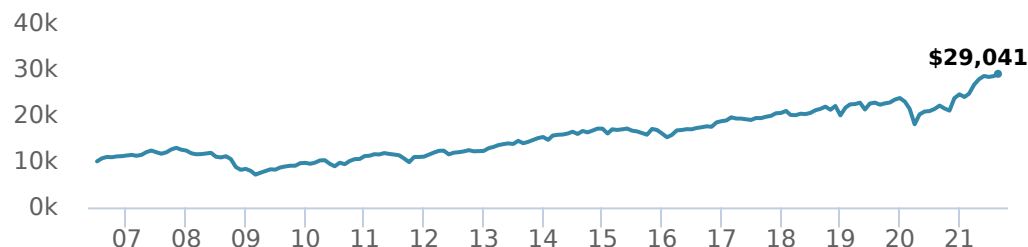


FUND CODES

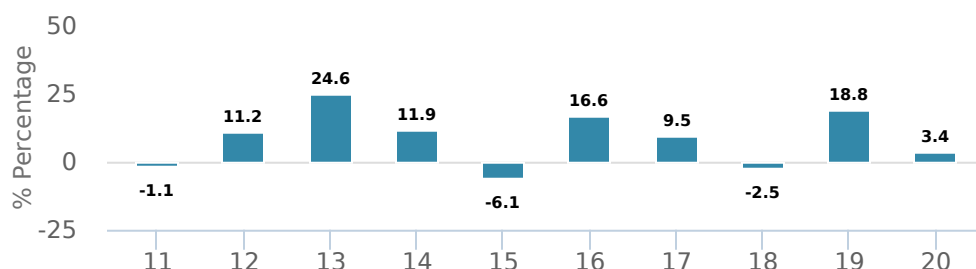
A	ISC 21113 DSC 21163 LL 21463
E	17162
F	21013
I	21513
O	19162
P	90364

PERFORMANCE²

Growth of \$10,000 (since inception date)



Calendar year performance



Average annual compound returns

YTD	1 Mo	3 Mo	6 Mo	1 Y	3 Y	5 Y	10 Y	Inception*
18.10%	1.70%	1.60%	17.50%	31.20%	10.70%	10.80%	10.60%	7.30%

*Since inception date

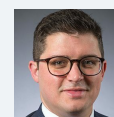
DISTRIBUTION HISTORY³

Payable date	Total	Payable date	Total
2021-08-27	0.0159	2021-03-26	0.0159
2021-06-25	0.0163	2021-02-19	0.0158
2021-07-23	0.0159	2021-01-22	0.0157
2021-05-28	0.0166	2020-12-18	0.0156
2021-04-23	0.0160	2020-11-27	0.0154

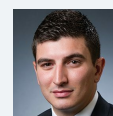
MANAGEMENT TEAM



Peter Hofstra



Greg Quickmire



Jeremy Rosa

CI U.S. Dividend Fund (formerly Cambridge U.S. Dividend Fund)

Series A USD



AS AT AUGUST 31, 2021

PORTFOLIO ALLOCATIONS⁴

Asset allocation	(%)	Sector allocation	(%)	Geographic allocation	(%)
US Equity	85.83%	Financial Services	26.80%	United States	87.83%
International Equity	6.82%	Technology	14.77%	Canada	5.37%
Canadian Equity	5.09%	Utilities	13.94%	Singapore	3.69%
Cash and Equivalents	2.28%	Other	10.95%	United Kingdom	3.13%
Other	-0.02%	Industrial Goods	6.92%	Other	-0.02%
		Industrial Services	6.06%		
		Consumer Goods	5.70%		
		Consumer Services	5.66%		
		Healthcare	4.81%		
		Telecommunications	4.39%		

TOP HOLDINGS

	Sector	(%)
1. Microsoft Corp	Computer Electronics	4.56%
2. Verizon Communications Inc	Diversified Telecommunications	4.39%
3. CBOE Holdings Inc	Diversified Financial Services	4.37%
4. NextEra Energy Inc	Electric Utilities	4.32%
5. Chubb Ltd	Insurance	4.17%
6. Jacobs Engineering Group Inc	Construction Materials	4.06%
7. Philip Morris International Inc	Consumer Non-durables	4.05%
8. CMS Energy Corp	Diversified Utilities	3.85%
9. Broadcom Ltd	Computer Electronics	3.69%
10. Humana Inc	Healthcare Services	3.68%
11. Facebook Inc Cl A	Information Technology	3.54%
12. CSX Corp	Transportation	3.49%
13. Intercontinental Exchange Inc	Diversified Financial Services	3.29%
14. Alliant Energy Corp	Diversified Utilities	3.17%
15. JPMorgan Chase & Co	Diversified Financial Services	3.16%

Note: This page is not complete without disclaimers on the next page.

Over 35,000 financial advisors have chosen CI Global Asset Management as a partner. We believe that Canadians have the best opportunity for investments success by using the services of a professional financial advisor. [Learn more at ci.com.](#)

¹ The risk level of a fund has been determined in accordance with a standardized risk classification methodology in National Instrument 81-102, that is based on the fund's historical volatility as measured by the 10-year standard deviation of the fund's returns. Where a fund has offered securities to the public for less than 10 years, the standardized methodology requires that the standard deviation of a reference mutual fund or index that reasonably approximates the fund's standard deviation be used to determine the fund's risk rating. Please note that historical performance may not be indicative of future returns and a fund's historical volatility may not be indicative of future volatility.

² Commissions, trailing commissions, management fees and expenses all may be associated with mutual fund investments. Please read the prospectus before investing. The indicated rates of return are the historical annual compounded total returns net of fees and expenses payable by the fund (except for figures of one year or less, which are simple total returns) including changes in security value and reinvestment of all dividends/distributions and do not take into account sales, redemption, distribution or optional charges or income taxes payable by any securityholder that would have reduced returns. Mutual funds are not guaranteed, their values change frequently, and past performance may not be repeated.

³ Please refer to the fund's simplified prospectus for distribution information.

⁴ Portfolio allocations will fluctuate over the life of the mutual fund as the portfolio holdings and market value of each security changes. The portfolio manager(s) may change the portfolio allocations in some or all of the sectors.

The contents are not to be used or construed as investment advice or as an endorsement or recommendation of any entity of security discussed.

Certain statements contained in this communication are based in whole or in part on information provided by third parties and CI has taken reasonable steps to ensure their accuracy.

The rates of return are used only to illustrate the effects of the compound growth rate and are not intended to reflect future values or returns on investment in an investment fund.

The "Growth of \$10,000" chart shows the final value of a hypothetical \$10,000 investment in securities in this class of the fund as at the end of the investment period indicated and is not intended to reflect future values or returns on investment in such securities.

Management Expense Ratio ("MER") represents the trailing 12-month management expense ratio, which reflects the cost of running the fund, inclusive of applicable taxes including HST, GST and QST (excluding commissions and other portfolio transaction costs) as a percentage of daily average net asset value the period, including the fund's proportionate share of any underlying fund(s) expenses, if applicable. The MER is reported in each fund's Management Report of Fund Performance ("MRFP"). MRFPs can be found within the Documents tab on ci.com.

CI Global Asset Management is a registered business name of CI Investments Inc.

©CI Investments Inc. 2021. All rights reserved.

Published September 2021