

# CI Global Balanced Corporate Class

Series FT5 CAD



AS AT MAY 31, 2026

## FUND OVERVIEW

This fund invests primarily in a balanced portfolio of equities and fixed income securities issued by governments, supra-national agencies or corporations anywhere in the world.

## FUND DETAILS

Inception date	July 2011
CAD Total net assets (\$CAD) As at 2026-05-29	\$218.0 million
NAVPS	\$10.8151
MER (%) As at 2025-09-30	1.36
Management fee (%)	1.00
Asset class	Global Balanced
Currency	CAD
Minimum investment	\$5,000 initial/\$25 additional
Distribution frequency	Monthly
Last distribution	\$0.0424

## Risk rating<sup>1</sup>



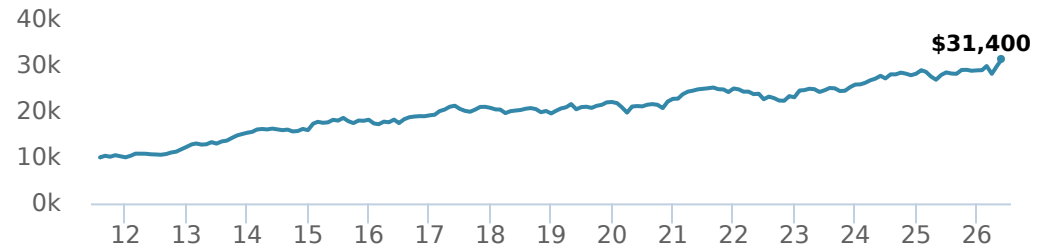
## FUND CODES

	T5		T8
F	4573	473T5	973T8
A	ISC 2573	ISC 173T5	ISC 673T8
	DSC SO* 3573	DSC SO 273T5	DSC SO 773T8
	LL SO 1573	LL SO 373T5	LL SO 873T8
E	16124	16724	16424
EF	15124	15724	15424
I	5573		
O	18124	18724	18424
P	90000	90500	90800

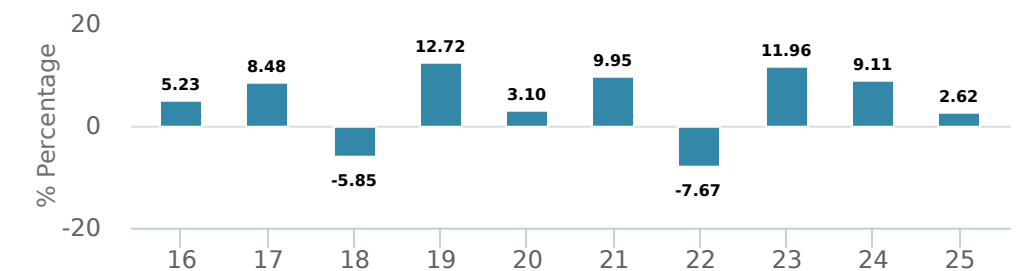
\*No new purchases directly into switch only funds.

## PERFORMANCE<sup>2</sup>

Growth of \$10,000 (since inception date)



## Calendar year performance



## Average annual compound returns

YTD	1 Mo	3 Mo	6 Mo	1 Y	3 Y	5 Y	10 Y	Inception*
8.56%	5.25%	5.16%	8.90%	12.45%	9.04%	4.83%	5.60%	8.01%

\*Since inception date

## DISTRIBUTION HISTORY<sup>3</sup>

Payable date	Total	Payable date	Total
2026-05-22	0.0424	2025-12-22	0.0434
2026-04-24	0.0424	2025-11-21	0.0434
2026-03-26	0.0424	2025-10-24	0.0434
2026-02-20	0.0424	2025-09-25	0.0434
2026-01-23	0.0424	2025-08-22	0.0434

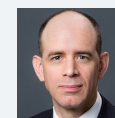
## CI PREFERRED PRICING<sup>4</sup>

Investment amount	Combined fee reduction
\$100,000 - \$500,000	0.15%
\$500,000 - \$1,000,000	0.21%
\$1,000,000 - \$2,500,000	0.32%
\$2,500,000 - \$5,000,000	0.40%
\$5,000,000 and above	0.52%

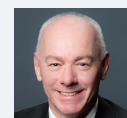
## MANAGEMENT TEAM



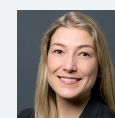
Black Creek Investment Management is led by award-winning money managers Bill Kanko and Richard Jenkins. Black Creek pursues an equity mandate with no restrictions on finding the best businesses in the world. Black Creek Investment Management is a sub-advisor to CI Global Asset Management.



Richard Schulte-Hostedde



Richard Jenkins



Melissa Casson

AS AT MAY 31, 2026

## PORTFOLIO ALLOCATIONS<sup>5</sup>

Asset allocation	(%)	Sector allocation	(%)	Geographic allocation	(%)
International Equity	<b>42.56</b>	Fixed Income	<b>23.60</b>	United States	<b>53.82</b>
US Equity	<b>26.80</b>	Technology	<b>22.35</b>	United Kingdom	<b>16.83</b>
Foreign Corporate Bonds	<b>20.30</b>	Healthcare	<b>13.72</b>	France	<b>6.11</b>
Cash and Equivalents	<b>6.68</b>	Consumer Services	<b>9.63</b>	Spain	<b>4.50</b>
Foreign Government Bonds	<b>1.48</b>	Industrial Goods	<b>9.12</b>	Other	<b>4.49</b>
Canadian Government Bonds	<b>1.24</b>	Consumer Goods	<b>7.60</b>	Netherlands	<b>3.64</b>
Canadian Corporate Bonds	<b>0.58</b>	Cash and Cash Equivalent	<b>6.68</b>	Japan	<b>3.31</b>
Canadian Equity	<b>0.34</b>	Financial Services	<b>3.47</b>	Canada	<b>2.73</b>
Other	<b>0.02</b>	Basic Materials	<b>1.96</b>	Mexico	<b>2.66</b>
		Other	<b>1.87</b>	Cayman Islands	<b>1.91</b>

## TOP HOLDINGS<sup>6</sup>

	Sector	(%)
1. Elanco Animal Health Inc	Drugs	<b>3.74%</b>
2. Aramark	Leisure	<b>3.69%</b>
3. RS Group PLC	Computer Electronics	<b>3.37%</b>
4. Informa PLC	Media	<b>3.29%</b>
5. Alphabet Inc Cl A	Information Technology	<b>3.26%</b>
6. ConvaTec Group PLC	Healthcare Equipment	<b>3.19%</b>
7. Cencora Inc	Healthcare Equipment	<b>2.98%</b>
8. Sunbelt Rentals Holdings Inc	Industrial Goods	<b>2.73%</b>
9. Fomento Economico Mexicano SAB de CV - ADR	Food, Beverage and Tobacco	<b>2.66%</b>
10. Accor SA	Leisure	<b>2.65%</b>
11. London Stock Exchange Group PLC	Asset Management	<b>2.51%</b>
12. Figs Inc Cl A	Consumer Non-durables	<b>2.44%</b>
13. Amadeus IT Group SA	Information Technology	<b>2.31%</b>
14. Grifols SA - ADR Cl B	Drugs	<b>2.19%</b>
15. Post Holdings Inc 4.50% 15-Sep-2031	Fixed Income	<b>2.19%</b>

**Over 35,000 financial advisors have chosen CI Global Asset Management as a partner. We believe that Canadians have the best opportunity for investments success by using the services of a professional financial advisor. [Learn more at ci.com](https://www.ci.com).**

<sup>1</sup> The risk level of a fund has been determined in accordance with a standardized risk classification methodology in National Instrument 81-102, that is based on the fund's historical volatility as measured by the 10-year standard deviation of the fund's returns. Where a fund has offered securities to the public for less than 10 years, the standardized methodology requires that the standard deviation of a reference mutual fund or index that reasonably approximates the fund's standard deviation be used to determine the fund's risk rating. Please note that historical performance may not be indicative of future returns and a fund's historical volatility may not be indicative of future volatility.

<sup>2</sup> Commissions, trailing commissions, management fees and expenses all may be associated with mutual fund investments. Please read the prospectus before investing. The indicated rates of return are the historical annual compounded total returns net of fees and expenses payable by the fund (except for figures of one year or less, which are simple total returns) including changes in security value and reinvestment of all dividends/distributions and do not take into account sales, redemption, distribution or optional charges or income taxes payable by any securityholder that would have reduced returns. Mutual funds are not guaranteed, their values change frequently, and past performance may not be repeated.

<sup>3</sup> Please refer to the fund's simplified prospectus for distribution information.

<sup>4</sup> CI Preferred Pricing fee reductions apply to management and administration fees and start at \$100,000.

<sup>6</sup> The portfolio holdings are subject to change without notice and may only represent a small percentage of portfolio holdings. They are not recommendations to buy or sell any particular security.

The contents are not to be used or construed as investment advice or as an endorsement or recommendation of any entity of security discussed.

Certain statements contained in this communication are based in whole or in part on information provided by third parties and CI has taken reasonable steps to ensure their accuracy.

The rates of return are used only to illustrate the effects of the compound growth rate and are not intended to reflect future values or returns on investment in an investment fund.

The "Growth of \$10,000 invested" chart shows the final value of a hypothetical \$10,000 investment in securities in this class/series of the fund as at the end of the investment period indicated and is not intended to reflect future values or returns on investment in such securities.

Management Expense Ratio ("MER") represents the trailing 12-month management expense ratio, which reflects the cost of running the fund, inclusive of applicable taxes including HST, GST and QST (excluding commissions and other portfolio transaction costs) as a percentage of daily average net asset value the period, including the fund's proportionate share of any underlying fund(s) expenses, if applicable. The MER is reported in each fund's Management Report of Fund Performance ("MRFP"). MRFPs can be found within the Documents tab on ci.com.

CI Global Asset Management is a registered business name of CI Investments Inc.

©CI Investments Inc. 2025. All rights reserved.

Published June 2026