

CI Resource Opportunities Class

Series A CAD



AS AT AUGUST 31, 2023

FUND OVERVIEW

CI Resource Opportunities Class aims to provide long-term capital appreciation by investing primarily in equity securities of companies involved in the energy and natural resources sector located anywhere in the world.

FUND DETAILS

| | |
|--|-------------------------------|
| Inception date | March 2000 |
| Total net assets (\$CAD) As at 2023-08-31 | \$32.2 million |
| NAVPS | \$27.5218 |
| MER (%) As at 2023-03-31 | 2.33 |
| Management fee (%) | 1.90 |
| Asset class | Sector Equity |
| Currency | CAD |
| Minimum investment | \$500 initial/\$25 additional |
| Distribution frequency | Annually |
| Last distribution | \$3.5053 |

Risk rating¹



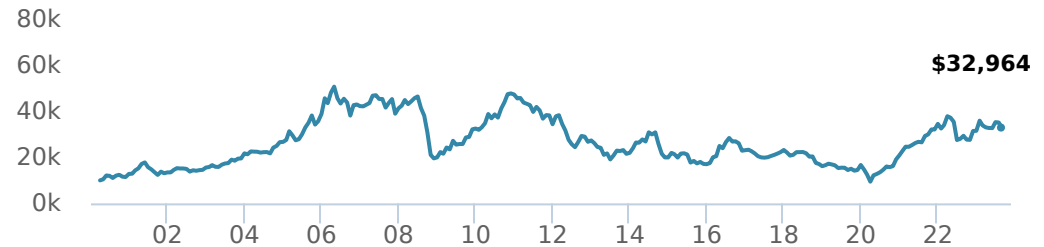
FUND CODES

| | |
|---|--|
| A | 50011 |
| B | DSC SO* 51011 LL SO 53011 LL 52011 |
| F | 54011 |
| I | 55011 |
| P | 58011 |

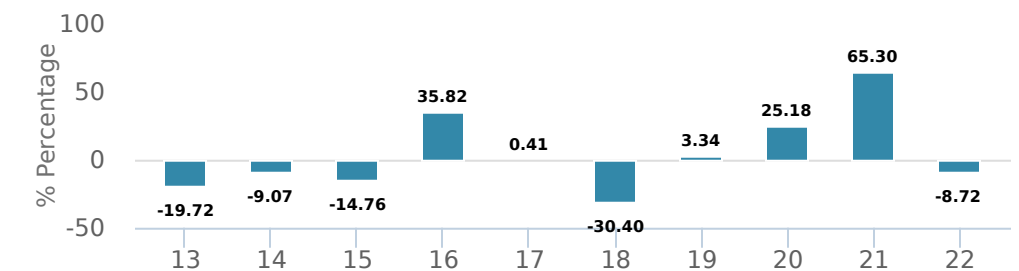
*No new purchases directly into switch only funds.

PERFORMANCE²

Growth of \$10,000 (since inception date)



Calendar year performance



Average annual compound returns

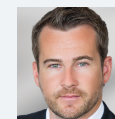
| YTD | 1 Mo | 3 Mo | 6 Mo | 1 Y | 3 Y | 5 Y | 10 Y | Inception* |
|-------|--------|-------|--------|--------|--------|--------|-------|------------|
| 4.43% | -6.29% | 0.70% | -2.82% | 12.10% | 27.11% | 10.16% | 3.69% | 5.22% |

*Since inception date

DISTRIBUTION HISTORY³

| Payable date | Total | Payable date | Total |
|--------------|--------|--------------|--------|
| 2022-03-25 | 3.5053 | 2016-12-29 | 0.2425 |
| 2021-03-26 | 0.3567 | 2003-12-30 | 0.1848 |
| 2019-12-30 | 0.1195 | 2001-01-22 | 0.2143 |
| 2018-12-14 | 0.1216 | | |
| 2017-12-28 | 0.1541 | | |

MANAGEMENT TEAM



Jon Case

CI PREFERRED PRICING⁴

| Investment amount | Combined fee reduction |
|-----------------------|------------------------|
| \$100,000 and above | 0.05% |
| \$250,000 and above | 0.08% |
| \$500,000 and above | 0.10% |
| \$1,000,000 and above | 0.13% |
| \$2,500,000 and above | 0.15% |
| \$5,000,000 and above | 0.18% |

AS AT AUGUST 31, 2023

PORTFOLIO ALLOCATIONS⁵

| Asset allocation | (%) | Sector allocation | (%) | Geographic allocation | (%) |
|----------------------|-------|--------------------------|-------|-----------------------|-------|
| International Equity | 46.83 | Basic Materials | 73.13 | Canada | 49.52 |
| Canadian Equity | 42.30 | Other | 11.49 | Australia | 28.38 |
| Cash and Equivalents | 10.42 | Cash and Cash Equivalent | 10.42 | Other | 7.67 |
| Derivatives | 0.45 | Technology | 4.96 | Chile | 7.42 |
| | | | | Cayman Islands | 3.82 |
| | | | | Brazil | 3.16 |
| | | | | Europe | 0.02 |
| | | | | United States | 0.01 |

TOP HOLDINGS

| | Sector | (%) |
|---|--------------------------|-------|
| 1. Cad Cash Sweep | Cash and Cash Equivalent | 7.98% |
| 2. Sociedad Quimica y Minera de Chile SA - ADR Sr B | Chemicals and Gases | 7.42% |
| 3. Solaris Resources Inc | Metals and Mining | 7.40% |
| 4. Leo Lithium Ltd | Metals and Mining | 7.30% |
| 5. Vida Carbon Corp | Other | 5.32% |
| 6. Lithium Americas Corp | Metals and Mining | 5.16% |
| 7. Allkem Ltd | Chemicals and Gases | 5.09% |
| 8. Base Carbon Inc | Diversified Technology | 4.96% |
| 9. Latin Resources Ltd | Metals and Mining | 4.89% |
| 10. Cyprium Metals Ltd | Metals and Mining | 4.48% |
| 11. Sayona Mining Ltd | Gold and Precious Metals | 4.38% |
| 12. NGE Minerals Ltd | Metals and Mining | 4.11% |
| 13. Adventus Mining Corp | Metals and Mining | 3.86% |
| 14. Metals Acquisition Corp CI A | Other | 3.82% |
| 15. Magna Mining Inc | Metals and Mining | 3.24% |

Over 35,000 financial advisors have chosen CI Global Asset Management as a partner. We believe that Canadians have the best opportunity for investments success by using the services of a professional financial advisor. [Learn more at ci.com.](#)

¹ The risk level of a fund has been determined in accordance with a standardized risk classification methodology in National Instrument 81-102, that is based on the fund's historical volatility as measured by the 10-year standard deviation of the fund's returns. Where a fund has offered securities to the public for less than 10 years, the standardized methodology requires that the standard deviation of a reference mutual fund or index that reasonably approximates the fund's standard deviation be used to determine the fund's risk rating. Please note that historical performance may not be indicative of future returns and a fund's historical volatility may not be indicative of future volatility.

² Commissions, trailing commissions, management fees and expenses all may be associated with mutual fund investments. Please read the prospectus before investing. The indicated rates of return are the historical annual compounded total returns net of fees and expenses payable by the fund (except for figures of one year or less, which are simple total returns) including changes in security value and reinvestment of all dividends/distributions and do not take into account sales, redemption, distribution or optional charges or income taxes payable by any securityholder that would have reduced returns. Mutual funds are not guaranteed, their values change frequently, and past performance may not be repeated.

³ Please refer to the fund's simplified prospectus for distribution information.

⁴ CI Preferred Pricing fee reductions apply to management and administration fees and start at \$100,000.

⁵ Portfolio allocations will fluctuate over the life of the mutual fund as the portfolio holdings and market value of each security changes. The portfolio manager(s) may change the portfolio allocations in some or all of the sectors.

The contents are not to be used or construed as investment advice or as an endorsement or recommendation of any entity of security discussed.

Certain statements contained in this communication are based in whole or in part on information provided by third parties and CI has taken reasonable steps to ensure their accuracy.

The rates of return are used only to illustrate the effects of the compound growth rate and are not intended to reflect future values or returns on investment in an investment fund.

The "Growth of \$10,000 invested" chart shows the final value of a hypothetical \$10,000 investment in securities in this class/series of the fund as at the end of the investment period indicated and is not intended to reflect future values or returns on investment in such securities.

Management Expense Ratio ("MER") represents the trailing 12-month management expense ratio, which reflects the cost of running the fund, inclusive of applicable taxes including HST, GST and QST (excluding commissions and other portfolio transaction costs) as a percentage of daily average net asset value the period, including the fund's proportionate share of any underlying fund(s) expenses, if applicable. The MER is reported in each fund's Management Report of Fund Performance ("MRFP"). MRFPs can be found within the Documents tab on ci.com.

CI Global Asset Management is a registered business name of CI Investments Inc.

©CI Investments Inc. 2023. All rights reserved.

Published September 2023