

# CI U.S. Dividend US\$ Fund (formerly Cambridge U.S. Dividend US\$ Fund)



Series F USD

AS AT SEPTEMBER 30, 2021

## FUND OVERVIEW

This fund invests primarily in equity securities of U.S. companies that pay, or may be expected to pay, dividends.

## FUND DETAILS

Inception date	March 2015
Total net assets (\$CAD) As at 2021-09-30	\$48.4 million
NAVPS	\$14.1074
MER (%) As at 2021-03-31	1.34
Management fee (%)	1.00
Asset class	U.S. Dividend
Currency	USD
Minimum investment	\$500 initial / \$25 additional
Distribution frequency	Monthly
Last distribution	\$0.0300

## Risk rating<sup>1</sup>

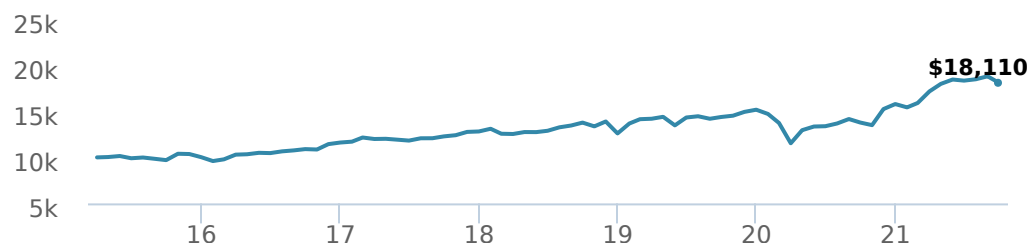


## FUND CODES

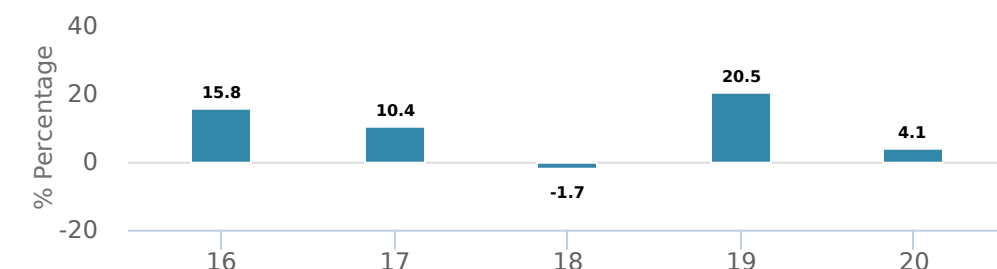
	T8	
F	21000	990T8
A	ISC 21100 DSC 21150 LL 21450	ISC 690T8 ISC 890T8 DSC 790T8
E	17150	
EF	15250	
I	21500	090T8
O	19150	
P	90365	

## PERFORMANCE<sup>2</sup>

Growth of \$10,000 (since inception date)



Calendar year performance



Average annual compound returns

YTD	1 Mo	3 Mo	6 Mo	1 Y	3 Y	5 Y	10 Y	Inception*
14.60%	-3.70%	-1.30%	5.40%	31.30%	9.50%	10.70%	-	9.50%

\*Since inception date

## DISTRIBUTION HISTORY<sup>3</sup>

Payable date	Total	Payable date	Total
2021-09-24	0.0300	2021-04-23	0.0300
2021-08-27	0.0300	2021-03-26	0.0300
2021-07-23	0.0300	2021-02-19	0.0300
2021-06-25	0.0300	2021-01-22	0.0300
2021-05-28	0.0300	2020-12-18	0.0300

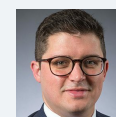
## CI PREFERRED PRICING<sup>4</sup>

Investment amount	Combined fee reduction
\$100,000 - \$500,000	0.08%
\$500,000 - \$1,000,000	0.11%
\$1,000,000 - \$2,500,000	0.21%
\$2,500,000 - \$5,000,000	0.29%
\$5,000,000 and above	0.41%

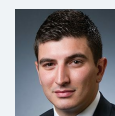
## MANAGEMENT TEAM



Peter Hofstra



Greg Quickmire



Jeremy Rosa

# CI U.S. Dividend US\$ Fund (formerly Cambridge U.S. Dividend US\$ Fund)

Series F USD



AS AT SEPTEMBER 30, 2021

## PORTFOLIO ALLOCATIONS<sup>5</sup>

Asset allocation	(%)	Sector allocation	(%)	Geographic allocation	(%)
US Equity	90.09%	Financial Services	30.38%	United States	91.32%
Canadian Equity	5.38%	Technology	14.70%	Canada	5.64%
International Equity	3.05%	Utilities	13.76%	United Kingdom	3.05%
Cash and Equivalents	1.49%	Other	10.01%	Other	-0.01%
Other	-0.01%	Consumer Services	6.01%		
		Industrial Services	5.89%		
		Consumer Goods	5.79%		
		Healthcare	4.80%		
		Telecommunications	4.50%		
		Industrial Goods	4.16%		

## TOP HOLDINGS

	Sector	(%)
1. Verizon Communications Inc	Diversified Telecommunications	4.50%
2. CBOE Global Markets Inc	Diversified Financial Services	4.48%
3. Microsoft Corp	Computer Electronics	4.44%
4. NextEra Energy Inc	Electric Utilities	4.22%
5. Jacobs Engineering Group Inc	Construction Materials	4.16%
6. Chubb Ltd	Insurance	4.11%
7. Philip Morris International Inc	Consumer Non-durables	3.90%
8. Broadcom Inc	Computer Electronics	3.76%
9. CMS Energy Corp	Diversified Utilities	3.74%
10. Humana Inc	Healthcare Services	3.69%
11. JPMorgan Chase & Co	Diversified Financial Services	3.37%
12. Booking Holdings Inc	Diversified Consumer Services	3.34%
13. CSX Corp	Transportation	3.33%
14. Facebook Inc Cl A	Information Technology	3.31%
15. Intercontinental Exchange Inc	Diversified Financial Services	3.30%

Note: This page is not complete without disclaimers on the next page.

Over 35,000 financial advisors have chosen CI Global Asset Management as a partner. We believe that Canadians have the best opportunity for investments success by using the services of a professional financial advisor. [Learn more at ci.com.](#)

<sup>1</sup> The risk level of a fund has been determined in accordance with a standardized risk classification methodology in National Instrument 81-102, that is based on the fund's historical volatility as measured by the 10-year standard deviation of the fund's returns. Where a fund has offered securities to the public for less than 10 years, the standardized methodology requires that the standard deviation of a reference mutual fund or index that reasonably approximates the fund's standard deviation be used to determine the fund's risk rating. Please note that historical performance may not be indicative of future returns and a fund's historical volatility may not be indicative of future volatility.

<sup>2</sup> Commissions, trailing commissions, management fees and expenses all may be associated with mutual fund investments. Please read the prospectus before investing. The indicated rates of return are the historical annual compounded total returns net of fees and expenses payable by the fund (except for figures of one year or less, which are simple total returns) including changes in security value and reinvestment of all dividends/distributions and do not take into account sales, redemption, distribution or optional charges or income taxes payable by any securityholder that would have reduced returns. Mutual funds are not guaranteed, their values change frequently, and past performance may not be repeated.

<sup>3</sup> Please refer to the fund's simplified prospectus for distribution information.

<sup>4</sup> CI Preferred Pricing fee reductions apply to management and administration fees and start at \$100,000.

<sup>5</sup> Portfolio allocations will fluctuate over the life of the mutual fund as the portfolio holdings and market value of each security changes. The portfolio manager(s) may change the portfolio allocations in some or all of the sectors.

The contents are not to be used or construed as investment advice or as an endorsement or recommendation of any entity of security discussed.

Certain statements contained in this communication are based in whole or in part on information provided by third parties and CI has taken reasonable steps to ensure their accuracy.

The rates of return are used only to illustrate the effects of the compound growth rate and are not intended to reflect future values or returns on investment in an investment fund.

The "Growth of \$10,000" chart shows the final value of a hypothetical \$10,000 investment in securities in this class of the fund as at the end of the investment period indicated and is not intended to reflect future values or returns on investment in such securities.

Management Expense Ratio ("MER") represents the trailing 12-month management expense ratio, which reflects the cost of running the fund, inclusive of applicable taxes including HST, GST and QST (excluding commissions and other portfolio transaction costs) as a percentage of daily average net asset value the period, including the fund's proportionate share of any underlying fund(s) expenses, if applicable. The MER is reported in each fund's Management Report of Fund Performance ("MRFP"). MRFPs can be found within the Documents tab on ci.com.

CI Global Asset Management is a registered business name of CI Investments Inc.

©CI Investments Inc. 2021. All rights reserved.

Published October 2021