

CI Global Investment Grade ETF

TSX TICKER : CGIN.U



AS AT MAY 31, 2024

FUND OVERVIEW

The ETF's investment objective is to generate income and the potential for long-term capital appreciation by investing primarily in a diversified portfolio of investment grade fixed-income securities issued by companies or governments of any size, located anywhere in the world.

FUND DETAILS

Inception date	October 2022
Total net assets (\$USD) As at 2024-05-31	\$3.0 million
NAVPS	\$20.7017
Market price	\$20.7100
MER (%) As at 2023-12-31	0.69
Management fee (%)	0.50
Units outstanding As at 2024-06-14	170,000
Asset class	Global Fixed Income
Currency	USD Hedged
CUSIP	12568W207
Distribution frequency	Monthly
Last distribution	\$0.0540
Average Credit Rating	A-

Risk rating¹



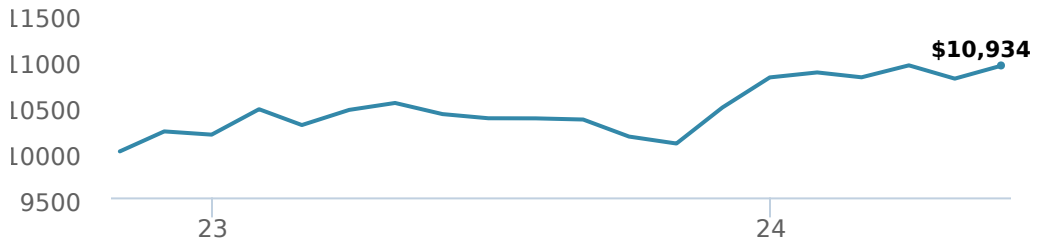
INVESTOR SUITABILITY

For Those Who:

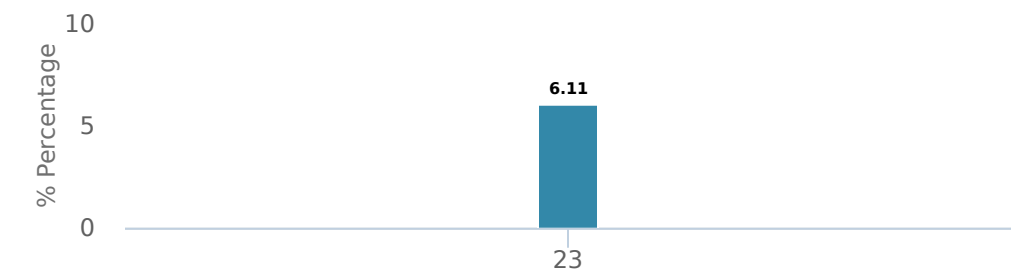
- Want Exposure To A Diversified Portfolio Of Investment Grade Fixed-income Securities Issued By Companies Or Governments Of Any Size, Located Anywhere In The World
- Are Investing For The Long Term
- Can Tolerate Low Risk
- Are Seeking Regular Income

PERFORMANCE²

Growth of \$10,000 (since inception date)



Calendar year performance



Average annual compound returns

	YTD	1 Mo	3 Mo	6 Mo	1 Y	3 Y	5 Y	10 Y	Inception*
	1.20%	1.33%	1.19%	4.36%	5.08%	-	-	-	5.76%

*Since inception date

DISTRIBUTION HISTORY³

Payable date	Total	Payable date	Total
2024-05-23	0.0540	2023-12-20	0.0540
2024-04-23	0.0540	2023-11-23	0.0540
2024-03-21	0.0540	2023-10-24	0.0540
2024-02-22	0.0540	2023-09-22	0.0540
2024-01-24	0.0540	2023-08-24	0.0540

FUND CHARACTERISTICS

Average Coupon %	4.64
Duration	5.25
Yield	5.74

RATING SUMMARY (%)

AAA	20.97
AA	0.83
A	20.80
BBB	49.93
BB	6.37
B	1.11
Average Credit Rating	A-

*Corporate and Government bonds only.

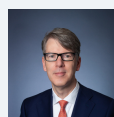
PORTFOLIO ALLOCATIONS⁴

Asset allocation	(%)	Sector allocation	(%)	Geographic allocation	(%)
Foreign Corporate Bonds	48.57	Fixed Income	89.21	United States	62.56
Canadian Corporate Bonds	18.48	Financial Services	4.79	Canada	31.15
Foreign Government Bonds	17.54	Cash and Cash Equivalent	2.45	Germany	1.65
Canadian Equity	6.57	Energy	0.94	Europe	1.52
Canadian Government Bonds	3.92	Real Estate	0.74	Australia	1.11
Cash and Equivalents	2.45	Telecommunications	0.62	Cayman Islands	0.97
US Equity	1.10	Utilities	0.41	Ireland	0.46
Canadian Bonds - Other	1.08	Technology	0.37	Other	0.34
International Equity	0.21	Mutual Fund	0.34	Bermuda	0.21
Other	0.08	Other	0.13	Hong Kong	0.03

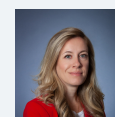
TOP HOLDINGS

	Sector	(%)
1. United States Treasury 4.00% 15-Feb-2034	Fixed Income	3.58%
2. CI Global High Yield Credit PP ETF C\$ (CGHY)	Exchange Traded Fund	3.42%
3. United States Treasury 4.00% 31-Jan-2031	Fixed Income	2.78%
4. UNITED STATES TREASURY NOTE/BOND 4.38% 15-May-2034	Fixed Income	2.67%
5. Canada Government 3.25% 01-Dec-2033	Fixed Income	1.97%
6. United States Treasury 4.75% 15-Nov-2053	Fixed Income	1.42%
7. United States Treasury 4.25% 28-Feb-2029	Fixed Income	1.10%
8. Canada Government 3.00% 01-Jun-2034	Fixed Income	1.08%
9. Apache Corp 4.25% 15-Jul-2043	Fixed Income	0.92%
10. BANK OF AMERICA CORP 5.29% 25-Apr-2038	Fixed Income	0.89%
11. HSBC Holdings PLC 5.72% 04-Mar-2034	Fixed Income	0.87%
12. Nissan Motor Co Ltd 4.81% 17-Jun-2030	Fixed Income	0.85%
13. UNITED STATES TREASURY NOTE/BOND 4.88% 30-Apr-2026	Fixed Income	0.84%
14. Lloyds Banking Group PLC 5.99% 07-Aug-2026	Fixed Income	0.82%
15. Wells Fargo & Co 5.57% 25-Jul-2028	Fixed Income	0.78%

MANAGEMENT TEAM



John Shaw



Leanne Ongaro

Over 35,000 financial advisors have chosen CI Global Asset Management as a partner. We believe that Canadians have the best opportunity for investments success by using the services of a professional financial advisor. [Learn more at ci.com.](#)

¹ The risk level of a fund has been determined in accordance with a standardized risk classification methodology in National Instrument 81-102, that is based on the fund's historical volatility as measured by the 10-year standard deviation of the fund's returns. Where a fund has offered securities to the public for less than 10 years, the standardized methodology requires that the standard deviation of a reference mutual fund or index that reasonably approximates the fund's standard deviation be used to determine the fund's risk rating. Please note that historical performance may not be indicative of future returns and a fund's historical volatility may not be indicative of future volatility.

² Commissions, management fees and expenses all may be associated with an investment in exchange-traded funds (ETFs). You will usually pay brokerage fees to your dealer if you purchase or sell units of an ETF on recognized Canadian exchanges. If the units are purchased or sold on these Canadian exchanges, investors may pay more than the current net asset value when buying units of the ETF and may receive less than the current net asset value when selling them. Please read the prospectus before investing. Important information about an exchange-traded fund is contained in its prospectus. The indicated rates of return are the historical annual compounded total returns net of fees and expenses payable by the fund (except for figures of one year or less, which are simple total returns) including changes in security value and reinvestment of all dividends/distributions and do not take into account sales, redemption, distribution or optional charges or income taxes payable by any securityholder that would have reduced returns. ETFs are not guaranteed; their values change frequently, and past performance may not be repeated.

³ Please refer to the fund's simplified prospectus for distribution information.

⁴ Portfolio allocations will fluctuate over the life of the ETF as the portfolio holdings and market value of each security changes. The portfolio manager(s) may change the portfolio allocations in some or all of the sectors.

The contents are not to be used or construed as investment advice or as an endorsement or recommendation of any entity of security discussed.

Certain statements contained in this communication are based in whole or in part on information provided by third parties and CI has taken reasonable steps to ensure their accuracy.

The rates of return are used only to illustrate the effects of the compound growth rate and are not intended to reflect future values or returns on investment in an investment fund.

The "Growth of \$10,000 invested" chart shows the final value of a hypothetical \$10,000 investment in securities in this class/series of the fund as at the end of the investment period indicated and is not intended to reflect future values or returns on investment in such securities.

Management Expense Ratio ("MER") represents the trailing 12-month management expense ratio, which reflects the cost of running the fund, inclusive of applicable taxes including HST, GST and QST (excluding commissions and other portfolio transaction costs) as a percentage of daily average net asset value the period, including the fund's proportionate share of any underlying fund(s) expenses, if applicable. The MER is reported in each fund's Management Report of Fund Performance ("MRFP"). MRFPs can be found within the Documents tab on ci.com.

The CI Exchange-Traded Funds (ETFs) are managed by CI Global Asset Management, a subsidiary of CI Financial Corp. (TSX: CIX). CI Global Asset Management is a registered business name of CI Investments Inc.

© CI Investments Inc. 2024. All rights reserved.