

# CI Global Alpha Innovation ETF

TSX TICKER : CINV.U



AS AT MAY 31, 2025

## FUND OVERVIEW

CINV's investment objective is to obtain maximum long-term capital growth from an actively managed portfolio that primarily invests in equity and equity-related securities of companies from around the world that are positioned to benefit from innovations and advancements in technology, products, processes, or services.

## FUND DETAILS

Inception date	August 2021
Total net assets (\$USD) As at 2025-05-30	\$689.3 thousand
NAVPS	\$27.5758
Market price	\$27.5800
MER (%) As at 2024-12-31	1.03
Management fee (%)	0.80
Units outstanding As at 2025-06-11	25,000
Asset class	Sector Equity
Currency	USD Hedged
CUSIP	12567C202

### Risk rating<sup>1</sup>



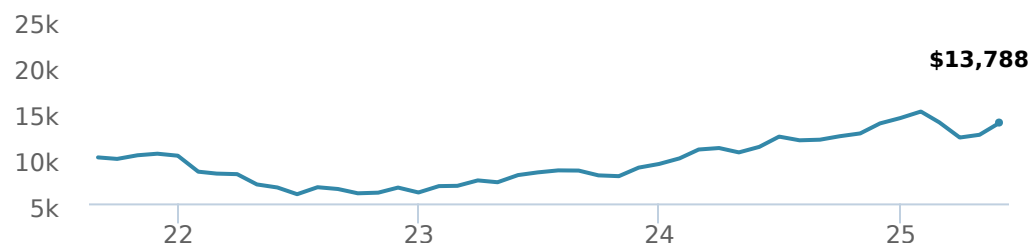
## INVESTOR SUITABILITY

For Those Who:

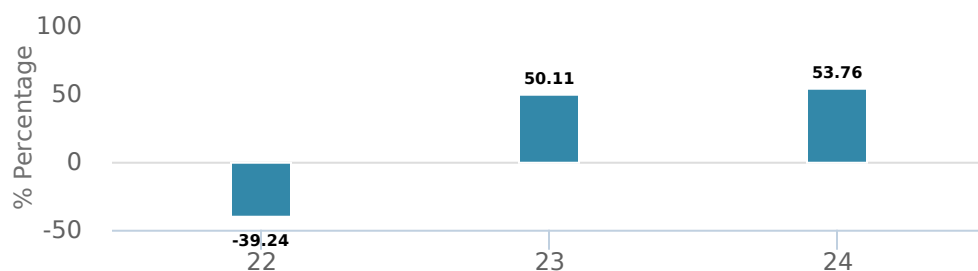
- Want To Invest In Companies From Around The World Positioned To Benefit From Innovations And Advancements In Technology, Products, Processes Or Services
- Are Investing For The Medium And/Or Long Term
- Can Tolerate Medium To High Risk

## PERFORMANCE<sup>2</sup>

Growth of \$10,000 (since inception date)



Calendar year performance



Average annual compound returns

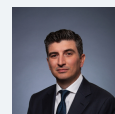
	YTD	1 Mo	3 Mo	6 Mo	1 Y	3 Y	5 Y	10 Y	Inception*
	-3.45%	10.67%	-0.13%	0.68%	23.71%	27.00%	-	-	8.81%

\*Since inception date

## MANAGEMENT TEAM



Peter Hofstra



Jeremy Rosa

# CI Global Alpha Innovation ETF

TSX TICKER : CINV.U



AS AT MAY 31, 2025

## PORTFOLIO ALLOCATIONS<sup>3</sup>

Asset allocation	(%)	Sector allocation	(%)	Geographic allocation	(%)
US Equity	81.82	Technology	77.98	United States	81.93
International Equity	13.26	Healthcare	7.33	Canada	4.77
Canadian Equity	3.18	Industrial Goods	3.99	Taiwan	4.09
Cash and Equivalents	1.75	Consumer Services	3.68	Cayman Islands	3.61
Other	-0.01	Financial Services	3.61	Israel	2.94
		Cash and Cash Equivalent	1.75	Japan	1.41
		Energy	1.67	Netherlands	1.22
		Other	-0.01	Europe	0.04
				Other	-0.01

## TOP HOLDINGS<sup>4</sup>

	Sector	(%)
1. NVIDIA Corp	Computer Electronics	8.28%
2. Microsoft Corp	Information Technology	7.30%
3. Broadcom Inc	Computer Electronics	6.49%
4. Meta Platforms Inc CI A	Information Technology	5.27%
5. Alphabet Inc CI C	Information Technology	5.25%
6. ServiceNow Inc	Information Technology	4.26%
7. Taiwan Semiconductor Manufactrg Co Ltd - ADR	Computer Electronics	4.09%
8. Palantir Technologies Inc CI A	Information Technology	3.81%
9. Amazon.com Inc	Retail	3.68%
10. Galaxy Digital Holdings Ltd	Asset Management	3.61%
11. Shopify Inc CI A	Information Technology	3.18%
12. Cyberark Software Ltd	Information Technology	2.94%
13. Axon Enterprise Inc	Aerospace and Defence	2.59%
14. Snowflake Inc CI A	Information Technology	2.35%
15. Intuitive Surgical Inc	Healthcare Equipment	2.32%

Note: This page is not complete without disclaimers on the next page.

**Over 35,000 financial advisors have chosen CI Global Asset Management as a partner. We believe that Canadians have the best opportunity for investments success by using the services of a professional financial advisor. [Learn more at ci.com.](#)**

<sup>1</sup> The risk level of a fund has been determined in accordance with a standardized risk classification methodology in National Instrument 81-102, that is based on the fund's historical volatility as measured by the 10-year standard deviation of the fund's returns. Where a fund has offered securities to the public for less than 10 years, the standardized methodology requires that the standard deviation of a reference mutual fund or index that reasonably approximates the fund's standard deviation be used to determine the fund's risk rating. Please note that historical performance may not be indicative of future returns and a fund's historical volatility may not be indicative of future volatility.

<sup>2</sup> Commissions, management fees and expenses all may be associated with an investment in exchange-traded funds (ETFs). You will usually pay brokerage fees to your dealer if you purchase or sell units of an ETF on recognized Canadian exchanges. If the units are purchased or sold on these Canadian exchanges, investors may pay more than the current net asset value when buying units of the ETF and may receive less than the current net asset value when selling them. Please read the prospectus before investing. Important information about an exchange-traded fund is contained in its prospectus. The indicated rates of return are the historical annual compounded total returns net of fees and expenses payable by the fund (except for figures of one year or less, which are simple total returns) including changes in security value and reinvestment of all dividends/distributions and do not take into account sales, redemption, distribution or optional charges or income taxes payable by any securityholder that would have reduced returns. ETFs are not guaranteed; their values change frequently, and past performance may not be repeated.

<sup>4</sup> The portfolio holdings are subject to change without notice and may only represent a small percentage of portfolio holdings. They are not recommendations to buy or sell any particular security.

The contents are not to be used or construed as investment advice or as an endorsement or recommendation of any entity of security discussed.

Certain statements contained in this communication are based in whole or in part on information provided by third parties and CI has taken reasonable steps to ensure their accuracy.

The rates of return are used only to illustrate the effects of the compound growth rate and are not intended to reflect future values or returns on investment in an investment fund.

The "Growth of \$10,000 invested" chart shows the final value of a hypothetical \$10,000 investment in securities in this class/series of the fund as at the end of the investment period indicated and is not intended to reflect future values or returns on investment in such securities.

Management Expense Ratio ("MER") represents the trailing 12-month management expense ratio, which reflects the cost of running the fund, inclusive of applicable taxes including HST, GST and QST (excluding commissions and other portfolio transaction costs) as a percentage of daily average net asset value the period, including the fund's proportionate share of any underlying fund(s) expenses, if applicable. The MER is reported in each fund's Management Report of Fund Performance ("MRFP"). MRFPs can be found within the Documents tab on ci.com.

The CI Exchange-Traded Funds (ETFs) are managed by CI Global Asset Management, a subsidiary of CI Financial Corp. (TSX: CIX). CI Global Asset Management is a registered business name of CI Investments Inc.

© CI Investments Inc. 2025. All rights reserved.